

For Research Use Only

GLIPR2 Polyclonal antibody, PBS Only

Catalog Number:16508-1-PBS



Basic Information

Catalog Number:

16508-1-PBS

Size:

100ug , Concentration: 1 mg/ml by Nanodrop;

Source:

Rabbit

Isotype:

IgG

Immunogen Catalog Number:

AG9725

GenBank Accession Number:

BC017918

GeneID (NCBI):

152007

UNIPROT ID:

Q9H4G4

Full Name:

GLI pathogenesis-related 2

Calculated MW:

153aa,17 kDa; 90aa,10 kDa

Observed MW:

17 kDa

Purification Method:

Antigen affinity purification

Applications

Tested Applications:

WB, IHC, IF/ICC, Indirect ELISA

Species Specificity:

human

Background Information

Golgi-associated plant pathogenesis-related protein 1 (GLIPR2, also known as C9orf19 and GAPR1) is a multifunctional protein with dual engagement in normal cellular processes and the intricacies of cancer biology. GLIPR2 has also been associated with a spectrum of cellular functions encompassing the regulation of autophagy (PMID: 12137952; 18824526). It has been reported that GLIPR2 is a newly identified negative regulator of autophagy that inhibits the class III phosphatidylinositol 3-kinase complex I (PtdIns3K-C1) complex activity (PMID: 33222586).

Storage

Storage:

Store at -80°C.

Storage Buffer:

PBS Only

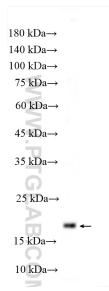
For technical support and original validation data for this product please contact:

T: 1 (888) 4PTGLAB (1-888-478-4522) (toll free in USA), or 1(312) 455-8498 (outside USA)

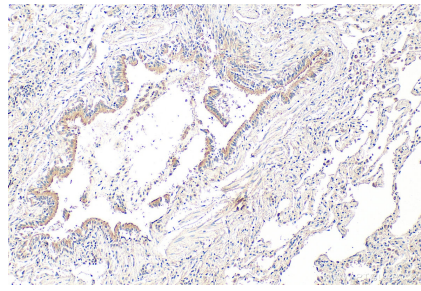
E: proteintech@ptglab.com
W: ptglab.com

This product is exclusively available under Proteintech Group brand and is not available to purchase from any other manufacturer.

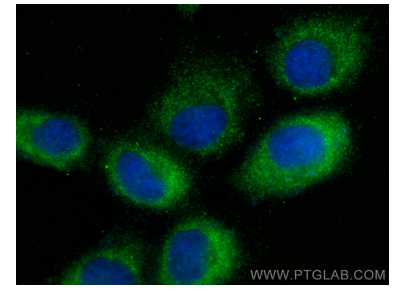
Selected Validation Data



human milk were subjected to SDS PAGE followed by western blot with 16508-1-AP (GLIPR2 antibody) at dilution of 1:600 incubated at room temperature for 1.5 hours. This data was developed using the same antibody clone with 16508-1-PBS in a different storage buffer formulation.



Immunohistochemical analysis of paraffin-embedded human lung tissue slide using 16508-1-AP (GLIPR2 antibody) at dilution of 1:200 (under 10x lens). Heat mediated antigen retrieval with Tris-EDTA buffer (pH 9.0). This data was developed using the same antibody clone with 16508-1-PBS in a different storage buffer formulation.



Immunofluorescent analysis of (-20°C Methanol) fixed A431 cells using GLIPR2 antibody (16508-1-AP) at dilution of 1:200 and CoraLite®488-Conjugated Goat Anti-Rabbit IgG(H+L) (SA00013-2). This data was developed using the same antibody clone with 16508-1-PBS in a different storage buffer formulation.