

For Research Use Only

# ODAM Polyclonal antibody

Catalog Number: 16509-1-AP **9 Publications**



## Basic Information

|  |   |  |
|--|---|--|
| <b>Catalog Number:</b><br>16509-1-AP   | <b>GenBank Accession Number:</b><br>BC017796            | <b>Purification Method:</b><br>Antigen affinity purification |
| <b>Size:</b><br>150ul , Concentration: 650 µg/ml by Nanodrop and 367 µg/ml by Bradford method using BSA as the standard; | <b>GeneID (NCBI):</b><br>54959                          | <b>Recommended Dilutions:</b><br>IHC 1:50-1:500              |
| <b>Source:</b><br>Rabbit   | <b>Full Name:</b><br>odontogenic, ameloblast associated |  |
| <b>Isotype:</b><br>IgG   | <b>Calculated MW:</b><br>153 aa, 17 kDa                 |  |
| <b>Immunogen Catalog Number:</b><br>AG9726   |   |  |

## Applications

|  |  |
|--|--|
| <b>Tested Applications:</b><br>IHC, ELISA  | <b>Positive Controls:</b><br>IHC : human lung cancer tissue, |
| <b>Cited Applications:</b><br>IF, IHC, WB  |  |
| <b>Species Specificity:</b><br>human   |  |
| <b>Cited Species:</b><br>canine, human, mouse  |  |
| <b>Note-IHC: suggested antigen retrieval with TE buffer pH 9.0; (*) Alternatively, antigen retrieval may be performed with citrate buffer pH 6.0</b> |  |

## Background Information

ODAM, also named as Apin, may be incorporated in the enamel matrix at the end of mineralization process.

## Notable Publications

| Author            | Pubmed ID | Journal        | Application |
|-------------------|-----------|----------------|-------------|
| Meng Hou          | 36442302  | Arch Oral Biol | IHC         |
| Yuto Tsuruya      | 34787682  | Inflamm Res    | IF          |
| Kiyoshi Yamaguchi | 36382598  | Cancer Sci     | WB, IHC     |

## Storage

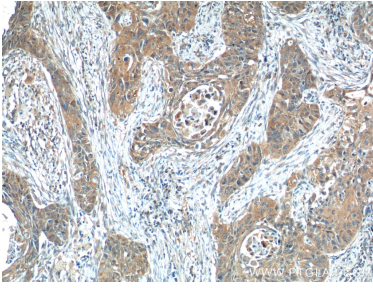
**Storage:**  
Store at -20°C. Stable for one year after shipment.  
**Storage Buffer:**  
PBS with 0.02% sodium azide and 50% glycerol pH 7.3.  
Aliquoting is unnecessary for -20°C storage

\*\*\* 20ul sizes contain 0.1% BSA

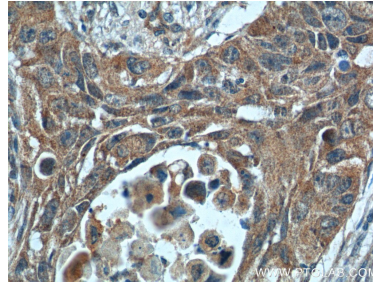
For technical support and original validation data for this product please contact:  
T: 1 (888) 4PTGLAB (1-888-478-4522) (toll free in USA), or 1(312) 455-8498 (outside USA) E: proteintech@ptglab.com W: ptglab.com

This product is exclusively available under Proteintech Group brand and is not available to purchase from any other manufacturer.

## Selected Validation Data



Immunohistochemical analysis of paraffin-embedded human lung cancer tissue slide using 16509-1-AP (ODAM Antibody) at dilution of 1:200 (under 10x lens).



Immunohistochemical analysis of paraffin-embedded human lung cancer tissue slide using 16509-1-AP (ODAM Antibody) at dilution of 1:200 (under 40x lens).