

For Research Use Only

SUPT5H Polyclonal antibody

Catalog Number: 16511-1-AP

Featured Product

2 Publications



Basic Information

Catalog Number:

16511-1-AP

Size:

150ul, Concentration: 1000 µg/ml by Nanodrop and 400 µg/ml by Bradford method using BSA as the standard;

Source:

Rabbit

Isotype:

IgG

Immunogen Catalog Number:

AG9728

GenBank Accession Number:

BC024203

GeneID (NCBI):

6829

Full Name:

Suppressor of Ty 5 homolog (S. cerevisiae)

Calculated MW:

1087 aa, 121 kDa

Observed MW:

140-150 kDa

Purification Method:

Antigen affinity purification

Recommended Dilutions:

WB 1:500-1:1000

IP 0.5-4.0 µg for IP and 1:500-1:1000

for WB

IF 1:50-1:500

Applications

Tested Applications:

IF, IP, WB, ELISA

Cited Applications:

WB

Species Specificity:

human, mouse, rat

Cited Species:

human

Positive Controls:

WB: HeLa cells, HepG2 cells

IP: HeLa cells,

IF: HepG2 cells,

Background Information

SUPT5H, also named as DSIF p160, is a 1087 amino acid protein, which belongs to the SPT5 family. SUPT5H localizes in the nucleus and is ubiquitously expressed. SUPT5H is a component of the DRB sensitivity-inducing factor complex (DSIF complex), which regulates mRNA processing and transcription elongation by RNA polymerase II. SUPT5H is modified through phosphorylation and methylated, so the molecular weight of SUPT5H might be 140-150 kDa.

Notable Publications

Author	Pubmed ID	Journal	Application
Shibin Hu	34534457	Mol Cell	WB
Shibin Hu	37080207	Mol Cell	WB

Storage

Storage:

Store at -20°C. Stable for one year after shipment.

Storage Buffer:

PBS with 0.02% sodium azide and 50% glycerol pH 7.3.

Aliquoting is unnecessary for -20°C storage

*** 20ul sizes contain 0.1% BSA

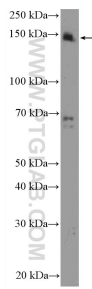
For technical support and original validation data for this product please contact:

T: 1 (888) 4PTGLAB (1-888-478-4522) (toll free in USA), or 1(312) 455-8498 (outside USA)

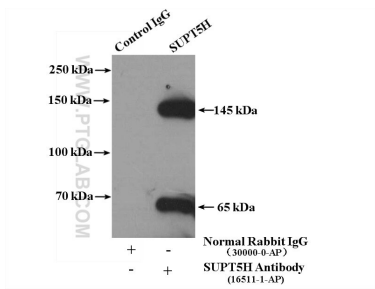
E: proteintech@ptglab.com
W: ptglab.com

This product is exclusively available under Proteintech Group brand and is not available to purchase from any other manufacturer.

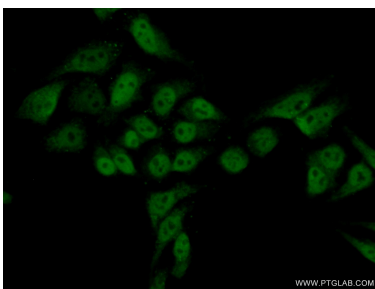
Selected Validation Data



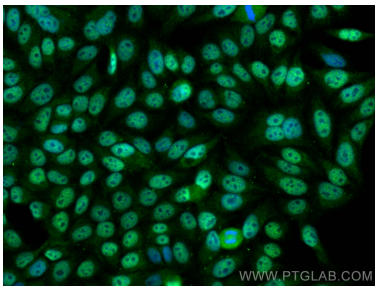
HeLa cells were subjected to SDS PAGE followed by western blot with 16511-1-AP (SUPT5H Antibody) at dilution of 1:600 incubated at room temperature for 1.5 hours.



IP Result of anti-SUPT5H (IP:16511-1-AP, 4ug; Detection:16511-1-AP 1:500) with HeLa cells lysate 3200ug.



Immunofluorescent analysis of (10% Formaldehyde) fixed HepG2 cells using 16511-1-AP (SUPT5H antibody) at dilution of 1:50 and Alexa Fluor 488-conjugated AffiniPure Goat Anti-Rabbit IgG(H+L).



Immunofluorescent analysis of (4% PFA) fixed HepG2 cells using SUPT5H antibody (16511-1-AP) at dilution of 1:200 and CoraLite®488-Conjugated AffiniPure Goat Anti-Rabbit IgG(H+L).