

For Research Use Only

DUSP22 Polyclonal antibody

Catalog Number: 16514-1-AP **2 Publications**



Basic Information

Catalog Number: 16514-1-AP	GenBank Accession Number: BC022847	Purification Method: Antigen affinity purification
Size: 150ul, Concentration: 133 µg/ml by Nanodrop and 133 µg/ml by Bradford method using BSA as the standard;	GeneID (NCBI): 56940	Recommended Dilutions: WB 1:200-1:600 IHC 1:20-1:200
Source: Rabbit	Full Name: dual specificity phosphatase 22	
Isotype: IgG	Calculated MW: 184 aa, 21 kDa	
Immunogen Catalog Number: AG9734	Observed MW: 21 kDa	

Applications

Tested Applications: IHC, WB, ELISA	Positive Controls:
Cited Applications: IHC, WB	WB: mouse heart tissue, mouse kidney tissue
Species Specificity: human, mouse	IHC: human lung cancer tissue,
Cited Species: human	

Note-IHC: suggested antigen retrieval with TE buffer pH 9.0; (*) Alternatively, antigen retrieval may be performed with citrate buffer pH 6.0

Background Information

DUSP22(Dual specificity protein phosphatase 22) is also named as JSP1, LMWDSP2, MKPX. It has been demonstrated to belong to a new subgroup of small DSPs anchored at the membranes by an N-terminal myristic acid moiety and DUSP22 play a regulatory role in the JNK or p38 MAPK pathways(PMID:17384676). It has 2 isoforms produced by alternative splicing with the molecular weight of 21 kDa and 23 kDa.

Notable Publications

Author	Pubmed ID	Journal	Application
Hsiu-Ping Lin	31693867	FASEB J	IHC
Pierre Mélard	27626696	Oncotarget	WB

Storage

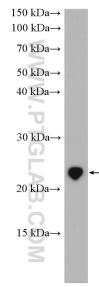
Storage:
Store at -20°C. Stable for one year after shipment.
Storage Buffer:
PBS with 0.02% sodium azide and 50% glycerol pH 7.3.
Aliquoting is unnecessary for -20°C storage

*** 20ul sizes contain 0.1% BSA

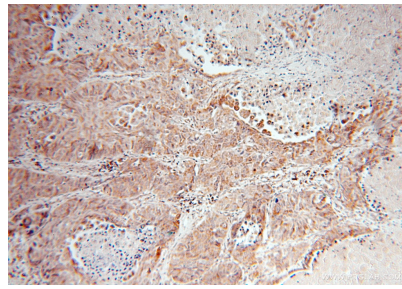
For technical support and original validation data for this product please contact:
T: 1 (888) 4PTGLAB (1-888-478-4522) (toll free in USA), or 1(312) 455-8498 (outside USA)
E: proteintech@ptglab.com
W: ptglab.com

This product is exclusively available under Proteintech Group brand and is not available to purchase from any other manufacturer.

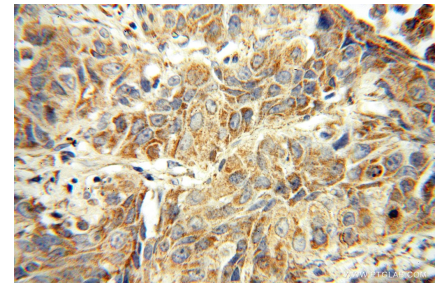
Selected Validation Data



mouse heart tissue were subjected to SDS PAGE followed by western blot with 16514-1-AP (DUSP22 antibody) at dilution of 1:300 incubated at room temperature for 1.5 hours.



Immunohistochemical analysis of paraffin-embedded human lung cancer using 16514-1-AP (DUSP22 antibody) at dilution of 1:50 (under 10x lens).



Immunohistochemical analysis of paraffin-embedded human lung cancer using 16514-1-AP (DUSP22 antibody) at dilution of 1:50 (under 40x lens).