

For Research Use Only

MRPL19 Polyclonal antibody

Catalog Number: 16517-1-AP **1 Publications**



Basic Information

Catalog Number: 16517-1-AP	GenBank Accession Number: BC030144	Purification Method: Antigen affinity purification
Size: 150ul , Concentration: 400 µg/ml by Nanodrop and 267 µg/ml by Bradford method using BSA as the standard;	GeneID (NCBI): 9801	Recommended Dilutions: WB 1:500-1:1000 IF 1:50-1:500
Source: Rabbit	Full Name: mitochondrial ribosomal protein L19	
Isotype: IgG	Calculated MW: 292 aa, 34 kDa	
Immunogen Catalog Number: AG9738	Observed MW: 34 kDa	

Applications

Tested Applications: IF, WB, ELISA	Positive Controls: WB : mouse kidney tissue, HeLa cells, mouse liver tissue IF : HeLa cells,
Cited Applications: IHC	
Species Specificity: human, mouse	
Cited Species: human	

Background Information

Notable Publications

Author	Pubmed ID	Journal	Application
Dong Wei	37577299	Transl Lung Cancer Res	IHC

Storage

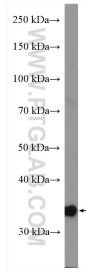
Storage:
Store at -20°C. Stable for one year after shipment.
Storage Buffer:
PBS with 0.02% sodium azide and 50% glycerol pH 7.3.
Aliquoting is unnecessary for -20°C storage

***** 20ul sizes contain 0.1% BSA**

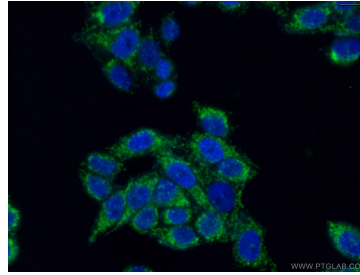
For technical support and original validation data for this product please contact:
T: 1 (888) 4PTGLAB (1-888-478-4522) (toll free in USA), or 1(312) 455-8498 (outside USA)
E: proteintech@ptglab.com
W: ptglab.com

This product is exclusively available under Proteintech Group brand and is not available to purchase from any other manufacturer.

Selected Validation Data



mouse kidney tissue were subjected to SDS PAGE followed by western blot with 16517-1-AP (MRPL19 antibody) at dilution of 1:500 incubated at room temperature for 1.5 hours.



Immunofluorescent analysis of (4% PFA) fixed HeLa cells using 16517-1-AP (MRPL19 antibody) at dilution of 1:50 and Alexa Fluor 488-conjugated AffiniPure Goat Anti-Rabbit IgG(H+L).