

For Research Use Only

# RNASEH2C Polyclonal antibody

Catalog Number: 16518-1-AP **3 Publications**



## Basic Information

<b>Catalog Number:</b> 16518-1-AP	<b>GenBank Accession Number:</b> BC023588	<b>Purification Method:</b> Antigen affinity purification
<b>Size:</b> 150ul , Concentration: 450 µg/ml by Nanodrop and 267 µg/ml by Bradford method using BSA as the standard;	<b>GeneID (NCBI):</b> 84153	<b>Recommended Dilutions:</b> WB 1:500-1:2000 IP 0.5-4.0 ug for IP and 1:500-1:1000 for WB IHC 1:20-1:200
<b>Source:</b> Rabbit	<b>Full Name:</b> ribonuclease H2, subunit C	
<b>Isotype:</b> IgG	<b>Calculated MW:</b> 164 aa, 18 kDa	
<b>Immunogen Catalog Number:</b> AG9739	<b>Observed MW:</b> 22 kDa	

## Applications

<b>Tested Applications:</b> IHC, IP, WB, ELISA	<b>Positive Controls:</b> WB : A549 cells, HEK-293 cells, human spleen tissue, human testis tissue, HeLa cells, Jurkat cells IP : HEK-293 cells, IHC : human brain tissue, human lung tissue, human skin tissue, human spleen tissue
<b>Cited Applications:</b> WB	
<b>Species Specificity:</b> human	
<b>Cited Species:</b> human	

**Note-IHC: suggested antigen retrieval with TE buffer pH 9.0; (\*) Alternatively, antigen retrieval may be performed with citrate buffer pH 6.0**

## Background Information

### Notable Publications

Author	Pubmed ID	Journal	Application
Sara Pizzi	25274781	Hum Mol Genet	WB
Laura A Lindsey-Boltz	26491008	J Biol Chem	WB
Michal Zimmermann	29973717	Nature	WB

## Storage

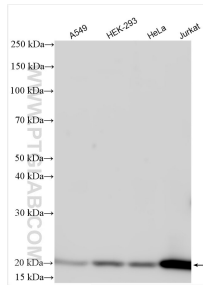
**Storage:**  
Store at -20°C. Stable for one year after shipment.  
**Storage Buffer:**  
PBS with 0.02% sodium azide and 50% glycerol pH 7.3.  
Aliquoting is unnecessary for -20°C storage

**\*\*\* 20ul sizes contain 0.1%BSA**

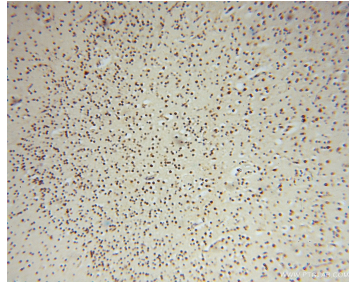
For technical support and original validation data for this product please contact:  
T: 1 (888) 4PTGLAB (1-888-478-4522) (toll free in USA), or 1(312) 455-8498 (outside USA)  
E: proteintech@ptglab.com  
W: ptglab.com

**This product is exclusively available under Proteintech Group brand and is not available to purchase from any other manufacturer.**

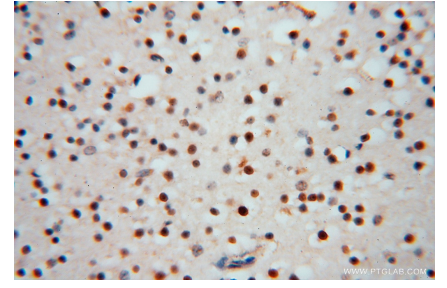
## Selected Validation Data



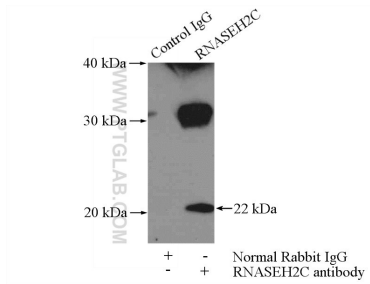
Various lysates were subjected to SDS PAGE followed by western blot with 16518-1-AP (RNASEH2C antibody) at dilution of 1:1000 incubated at room temperature for 1.5 hours.



Immunohistochemical analysis of paraffin-embedded human brain using 16518-1-AP (RNASEH2C antibody) at dilution of 1:50 (under 10x lens).



Immunohistochemical analysis of paraffin-embedded human brain using 16518-1-AP (RNASEH2C antibody) at dilution of 1:50 (under 40x lens).



IP Result of anti-RNASEH2C (IP:16518-1-AP, 3ug; Detection:16518-1-AP 1:500) with HEK-293 cells lysate 3200ug.