

For Research Use Only

# PMEPA1 Polyclonal antibody

Catalog Number: 16521-1-AP

Featured Product

8 Publications



## Basic Information

### Catalog Number:

16521-1-AP

### Size:

150ul, Concentration: 650 ug/ml by Nanodrop;

### Source:

Rabbit

### Isotype:

IgG

### Immunogen Catalog Number:

AG9744

### GenBank Accession Number:

BC015918

### GeneID (NCBI):

56937

### UNIPROT ID:

Q969W9

### Full Name:

prostate transmembrane protein, androgen induced 1

### Calculated MW:

287 aa, 32 kDa

### Observed MW:

32-36 kDa

### Purification Method:

Antigen affinity purification

### Recommended Dilutions:

WB 1:500-1:2000

IHC 1:200-1:800

## Applications

### Tested Applications:

WB, IHC, ELISA

### Cited Applications:

WB, IHC, IF

### Species Specificity:

human, mouse, rat

### Cited Species:

human, mouse

### Positive Controls:

WB : L02 cells, U2OS cells

IHC : human ovary tumor tissue,

**Note-IHC: suggested antigen retrieval with TE buffer pH 9.0; (\*) Alternatively, antigen retrieval may be performed with citrate buffer pH 6.0**

## Background Information

PMEPA1, also known as TMEPA1, was first discovered as androgen inducible gene in hormone responsive LNCaP cells. PMEPA1 is highly expressed in various solid tumors and is known to play important roles in the transforming growth factor- $\beta$  (TGF- $\beta$ ) signaling pathway (PMID: 27697531).

## Notable Publications

Author	Pubmed ID	Journal	Application
Dongxu Qiu	34777336	Front Immunol	WB, IHC
Masaru Koido	27697531	Biochem Biophys Res Commun	WB
Morgane Morabito	31328883	EMBO Mol Med	WB

## Storage

### Storage:

Store at -20°C. Stable for one year after shipment.

### Storage Buffer:

PBS with 0.02% sodium azide and 50% glycerol pH 7.3.

Aliquoting is unnecessary for -20°C storage

\*\*\* 20ul sizes contain 0.1% BSA

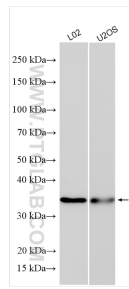
For technical support and original validation data for this product please contact:

T: 1 (888) 4PTGLAB (1-888-478-4522) (toll free in USA), or 1(312) 455-8498 (outside USA)

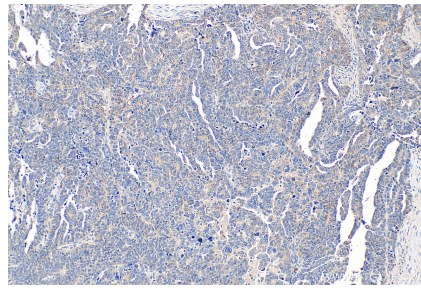
E: [proteintech@ptglab.com](mailto:proteintech@ptglab.com)  
W: [ptglab.com](http://ptglab.com)

This product is exclusively available under Proteintech Group brand and is not available to purchase from any other manufacturer.

## Selected Validation Data



Various lysates were subjected to SDS PAGE followed by western blot with 16521-1-AP (PMEPA1 antibody) at dilution of 1:1000 incubated at room temperature for 1.5 hours.



Immunohistochemical analysis of paraffin-embedded human ovary tumor tissue slide using 16521-1-AP (PMEPA1 antibody) at dilution of 1:400 (under 10x lens). Heat mediated antigen retrieval with Tris-EDTA buffer (pH 9.0).