

For Research Use Only

RRP15 Polyclonal antibody

Catalog Number: 16523-1-AP

Featured Product



Basic Information

Catalog Number: 16523-1-AP	GenBank Accession Number: BC020641	Purification Method: Antigen affinity purification
Size: 150ul , Concentration: 300 µg/ml by Nanodrop and 267 µg/ml by Bradford method using BSA as the standard;	GeneID (NCBI): 51018	Recommended Dilutions: WB 1:1000-1:4000
Source: Rabbit	Full Name: ribosomal RNA processing 15 homolog (S. cerevisiae)	
Isotype: IgG	Calculated MW: 259 aa, 29 kDa	
Immunogen Catalog Number: AG9759	Observed MW: 31-40 kDa	

Applications

Tested Applications: WB, ELISA	Positive Controls: WB : HeLa cells, HEK-293 cells, A549 cells
Species Specificity: human, mouse, rat	

Background Information

Storage

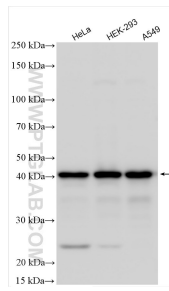
Storage:
Store at -20°C. Stable for one year after shipment.
Storage Buffer:
PBS with 0.02% sodium azide and 50% glycerol pH 7.3.
Aliquoting is unnecessary for -20°C storage

*** 20ul sizes contain 0.1% BSA

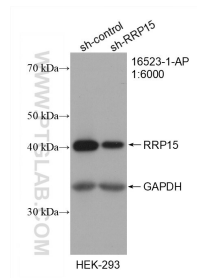
For technical support and original validation data for this product please contact:
T: 1 (888) 4PTGLAB (1-888-478-4522) (toll free in USA), or 1(312) 455-8498 (outside USA) E: proteintech@ptglab.com
W: ptglab.com

This product is exclusively available under Proteintech Group brand and is not available to purchase from any other manufacturer.

Selected Validation Data



Various lysates were subjected to SDS PAGE followed by western blot with 16523-1-AP (RRP15 antibody) at dilution of 1:2000 incubated at room temperature for 1.5 hours.



WB result of RRP15 antibody (16523-1-AP; 1:6000; incubated at room temperature for 1.5 hours) with sh-Control and sh-RRP15 transfected HEK-293 cells.