

For Research Use Only

IMPACT Polyclonal antibody, PBS Only

Catalog Number: 16528-1-PBS



Basic Information

Catalog Number: 16528-1-PBS	GenBank Accession Number: BC034016	Purification Method: Antigen affinity purification
Size: 100ug , Concentration: 1 mg/ml by Nanodrop;	GeneID (NCBI): 55364	
Source: Rabbit	UNIPROT ID: Q9P2X3	
Isotype: IgG	Full Name: Impact homolog (mouse)	
Immunogen Catalog Number: AG9776	Calculated MW: 320 aa, 36 kDa	
	Observed MW: 40 kDa	

Applications

Tested Applications:
WB, Indirect ELISA

Species Specificity:
human, mouse, rat

Background Information

Mouse Impact is a paternally expressed imprinted gene, encoding a highly conserved protein whose exact biological function remains under investigation. It is located in a syntenic region on mouse chromosome 18, corresponding to human chromosome.

Storage

Storage:
Store at -80°C.

Storage Buffer:
PBS only, pH7.3

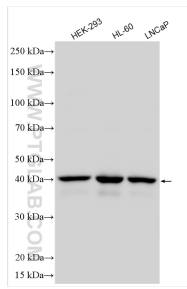
For technical support and original validation data for this product please contact:

T: 1 (888) 4PTGLAB (1-888-478-4522) (toll free
in USA), or 1(312) 455-8498 (outside USA)

E: proteintech@ptglab.com
W: ptglab.com

This product is exclusively available under Proteintech Group brand and is not available to purchase from any other manufacturer.

Selected Validation Data



Various lysates were subjected to SDS PAGE followed by western blot with 16528-1-AP (IMPACT antibody) at dilution of 1:2000 incubated at room temperature for 1.5 hours. This data was developed using the same antibody clone with 16528-1-PBS in a different storage buffer formulation.