

For Research Use Only

CTHRC1 Polyclonal antibody, PBS Only

Catalog Number: 16534-1-PBS

Featured Product



Basic Information

Catalog Number:

16534-1-PBS

Size:

100ug, Concentration: 1 mg/ml by Nanodrop;

Source:

Rabbit

Isotype:

IgG

Immunogen Catalog Number:

AG9812

GenBank Accession Number:

BC014245

GeneID (NCBI):

115908

UNIPROT ID:

Q96CG8

Full Name:

collagen triple helix repeat containing 1

Calculated MW:

243 aa, 26 kDa

Observed MW:

25-30 kDa

Purification Method:

Antigen affinity purification

Applications

Tested Applications:

WB, IF/ICC, FC (Intra), IP, Indirect ELISA

Species Specificity:

human, mouse, rat

Background Information

Collagen triple helix repeat-containing protein 1 (CTHRC1), also known as protein NMTC1, is a glycosylated secreted protein. CTHRC1 was identified as a novel molecular in injured and diseased arteries where it may contribute to vascular remodeling by limiting collagen matrix deposition and promoting cell migration (PMID: 15618538). It has been reported that CTHRC1 is a positive regulator of osteoblastic bone formation (PMID: 18779865). Besides, studies reveal that CTHRC1 expression is implicated in various malignancies, including hepatocellular carcinoma, gastric carcinoma, colon cancer, and lung cancer (PMID: 23922981; 24504172; 24746208; 25139095).

Storage

Storage:

Store at -80°C.

Storage Buffer:

PBS only, pH7.3

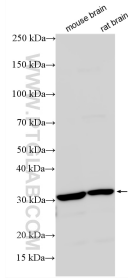
For technical support and original validation data for this product please contact:

T: 1 (888) 4PTGLAB (1-888-478-4522) (toll free in USA), or 1(312) 455-8498 (outside USA)

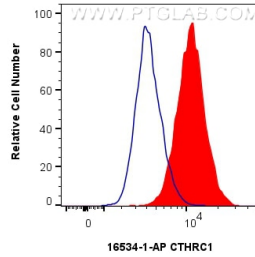
E: proteintech@ptglab.com
W: ptglab.com

This product is exclusively available under Proteintech Group brand and is not available to purchase from any other manufacturer.

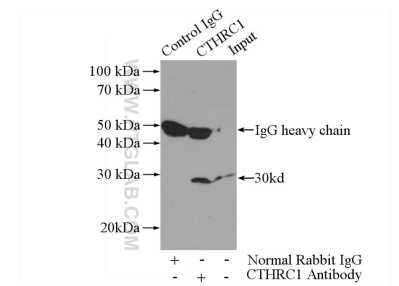
Selected Validation Data



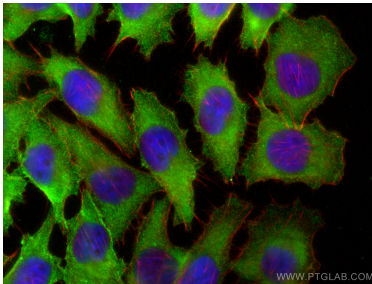
Various lysates were subjected to SDS PAGE followed by western blot with 16534-1-AP (CTHRC1 antibody) at dilution of 1:8000 incubated at room temperature for 1.5 hours. This data was developed using the same antibody clone with 16534-1-PBS in a different storage buffer formulation.



1×10^6 A375 cells were intracellularly stained with 0.13 μ g CTHRC1 Polyclonal antibody (16534-1-AP) and CoraLite[®]488-Conjugated Goat Anti-Rabbit IgG(H+L) (SA00013-2)(red), or 0.13 μ g Isotype Control (blue). Cells were fixed with 4% PFA and permeabilized with Flow Cytometry Perm Buffer. This data was developed using the same antibody clone with 16534-1-PBS in a different storage buffer formulation.



IP result of anti-CTHRC1 (IP:16534-1-AP, 3 μ g; Detection:16534-1-AP 1:500) with A375 cells lysate 3600 μ g. This data was developed using the same antibody clone with 16534-1-PBS in a different storage buffer formulation.



Immunofluorescent analysis of (-20 $^{\circ}$ C Ethanol) fixed A375 cells using CTHRC1 antibody (16534-1-AP) at dilution of 1:200 and CoraLite[®]488-Conjugated AffiniPure Goat Anti-Rabbit IgG(H+L) (SA00013-2), CL594-Phalloidin (red). This data was developed using the same antibody clone with 16534-1-PBS in a different storage buffer formulation.