

For Research Use Only

TOP1MT Polyclonal antibody

Catalog Number: 16540-1-AP

Featured Product

2 Publications



Basic Information

Catalog Number:

16540-1-AP

Size:

150ul, Concentration: 500 ug/ml by Nanodrop and 440 ug/ml by Bradford method using BSA as the standard;

Source:

Rabbit

Isotype:

IgG

Immunogen Catalog Number:

AG9857

GenBank Accession Number:

BC052285

GeneID (NCBI):

116447

UNIPROT ID:

Q969P6

Full Name:

topoisomerase (DNA) I, mitochondrial

Calculated MW:

601 aa, 70 kDa

Observed MW:

70 kDa

Purification Method:

Antigen affinity purification

Recommended Dilutions:

WB 1:500-1:2000

Applications

Tested Applications:

WB, ELISA

Cited Applications:

WB

Species Specificity:

human

Cited Species:

human

Positive Controls:

WB : COLO 320 cells,

Notable Publications

Author	Pubmed ID	Journal	Application
Benedict G Tan	36044900	Mol Cell	WB
Hongqiang Wang	38200513	Cancer Metab	WB

Storage

Storage:

Store at -20°C. Stable for one year after shipment.

Storage Buffer:

PBS with 0.02% sodium azide and 50% glycerol pH 7.3.

Aliquoting is unnecessary for -20°C storage

*** 20ul sizes contain 0.1% BSA

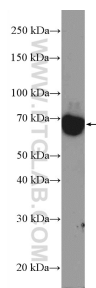
For technical support and original validation data for this product please contact:

T: 1 (888) 4PTGLAB (1-888-478-4522) (toll free in USA), or 1(312) 455-8498 (outside USA)

E: proteintech@ptglab.com
W: ptglab.com

This product is exclusively available under Proteintech Group brand and is not available to purchase from any other manufacturer.

Selected Validation Data



COLO 320 cells were subjected to SDS PAGE followed by western blot with 16540-1-AP (TOP1MT Antibody) at dilution of 1:1000 incubated at room temperature for 1.5 hours.