

For Research Use Only

CRYGS Polyclonal antibody

Catalog Number: 16542-1-AP



Basic Information

Catalog Number:

16542-1-AP

Size:

150ul , Concentration: 400 ug/ml by Nanodrop;

Source:

Rabbit

Isotype:

IgG

Immunogen Catalog Number:

AG9868

GenBank Accession Number:

BC070241

GeneID (NCBI):

1427

UNIPROT ID:

P22914

Full Name:

crystallin, gamma S

Calculated MW:

178 aa, 21 kDa

Observed MW:

21 kDa

Purification Method:

Antigen affinity purification

Recommended Dilutions:

WB 1:20000-1:100000

Applications

Tested Applications:

WB, ELISA

Species Specificity:

human, rat

Positive Controls:

WB : rat eye tissue,

Background Information

CRYGS (Gamma-S crystallin), also called CRYG8, belongs to the gamma-crystallins (PMID: 7733876; 23199295). Three major classes of crystallins, alpha, beta, and gamma, are common to the eye lens throughout all vertebrates. The beta and gamma classes are made up of homologous proteins and constitute the beta/gamma crystallin superfamily. CRYGS is expressed late but abundantly in the ocular lens (PMID: 1445197). It is also expressed outside the lens, particularly in the mature retina and cornea. In contrast to the beta-crystallins which associate in various combinations to form low or high molecular weight aggregates, CRYGS is, like the other gamma-crystallins, a monomeric protein (PMID: 16141006).

Storage

Storage:

Store at -20°C. Stable for one year after shipment.

Storage Buffer:

PBS with 0.02% sodium azide and 50% glycerol pH 7.3.

Aliquoting is unnecessary for -20°C storage

*** 20ul sizes contain 0.1% BSA

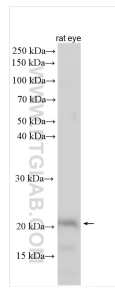
For technical support and original validation data for this product please contact:

T: 1 (888) 4PTGLAB (1-888-478-4522) (toll free in USA), or 1(312) 455-8498 (outside USA)

E: proteintech@ptglab.com
W: ptglab.com

This product is exclusively available under Proteintech Group brand and is not available to purchase from any other manufacturer.

Selected Validation Data



Various lysates were subjected to SDS PAGE followed by western blot with 16542-1-AP (CRYGS antibody) at dilution of 1:80000 incubated at room temperature for 1.5 hours.