

For Research Use Only

SMPDL3B Polyclonal antibody

Catalog Number: 16552-1-AP

Featured Product

4 Publications



Basic Information

Catalog Number: 16552-1-AP	GenBank Accession Number: BC014444	Purification Method: Antigen affinity purification
Size: 150ul, Concentration: 600 µg/ml by Nanodrop and 333 µg/ml by Bradford method using BSA as the standard;	GeneID (NCBI): 27293	Recommended Dilutions: WB 1:500-1:2000 IHC 1:250-1:1000
Source: Rabbit	Full Name: sphingomyelin phosphodiesterase, acid-like 3B	
Isotype: IgG	Calculated MW: 373aa, 42 kDa; 455aa, 51 kDa	
Immunogen Catalog Number: AG9535	Observed MW: 42 kDa, 50-65 kDa	

Applications

Tested Applications: IHC, WB, ELISA	Positive Controls: WB : COLO 320 cells, HEK-293 cells IHC : human kidney tissue, human colon cancer tissue
Cited Applications: IF, IHC, WB	
Species Specificity: human, mouse, rat	
Cited Species: human, rat, mouse, monkey, pig	
Note-IHC: suggested antigen retrieval with TE buffer pH 9.0; (*) Alternatively, antigen retrieval may be performed with citrate buffer pH 6.0	

Background Information

SMPDL3B is lipid-modulating phosphodiesterase. Active on the surface of macrophages and dendritic cells and strongly influences macrophage lipid composition and membrane fluidity. SMPDL3B acts as a negative regulator of Toll-like receptor signaling. It lacks activity with phosphocholine-containing lipids, but can cleave CDP-choline, and can release phosphate from ATP and ADP in vitro (PMID: 26095358). SMPDL3B can be detected 60-70 kDa by N-glycosylation modification (PMID: 26095358, PMID: 31217420).

Notable Publications

Author	Pubmed ID	Journal	Application
Taesik Gwag	33294831	JHEP Rep	WB
Xin Li	29923306	Basic Clin Pharmacol Toxicol	WB, IHC
Huiqing Qu	34504869	Front Mol Biosci	WB

Storage

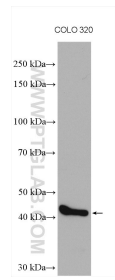
Storage:
Store at -20°C. Stable for one year after shipment.
Storage Buffer:
PBS with 0.02% sodium azide and 50% glycerol pH 7.3.
Aliquoting is unnecessary for -20°C storage

*** 20ul sizes contain 0.1% BSA

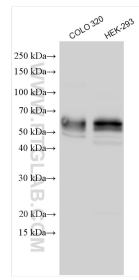
For technical support and original validation data for this product please contact:
T: 1 (888) 4PTGLAB (1-888-478-4522) (toll free in USA), or 1(312) 455-8498 (outside USA)
E: proteintech@ptglab.com
W: ptglab.com

This product is exclusively available under Proteintech Group brand and is not available to purchase from any other manufacturer.

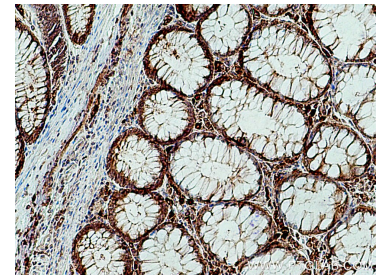
Selected Validation Data



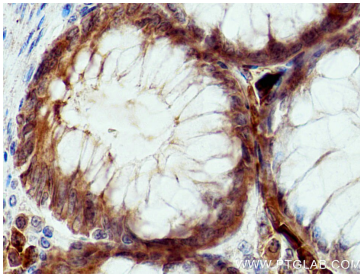
COLO 320 cells lysates were subjected to SDS PAGE followed by western blot with 16552-1-AP (SMPDL3B antibody) at dilution of 1:1500 incubated at room temperature for 1.5 hours.



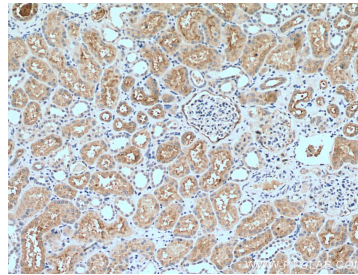
Various lysates were subjected to SDS PAGE followed by western blot with 16552-1-AP (SMPDL3B antibody) at dilution of 1:1000 incubated at room temperature for 1.5 hours.



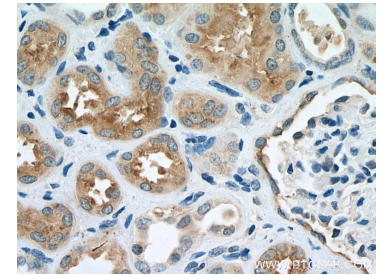
Immunohistochemical analysis of paraffin-embedded human colon cancer tissue slide using 16552-1-AP (SMPDL3B antibody) at dilution of 1:200 (under 10x lens). Heat mediated antigen retrieval with Tris-EDTA buffer (pH 9.0).



Immunohistochemical analysis of paraffin-embedded human colon cancer tissue slide using 16552-1-AP (SMPDL3B antibody) at dilution of 1:200 (under 40x lens). Heat mediated antigen retrieval with Tris-EDTA buffer (pH 9.0).



Immunohistochemical analysis of paraffin-embedded human kidney tissue slide using 16552-1-AP (SMPDL3B antibody) at dilution of 1:500 (under 10x lens). Heat mediated antigen retrieval with Tris-EDTA buffer (pH 9.0).



Immunohistochemical analysis of paraffin-embedded human kidney tissue slide using 16552-1-AP (SMPDL3B antibody) at dilution of 1:500 (under 40x lens). Heat mediated antigen retrieval with Tris-EDTA buffer (pH 9.0).