

For Research Use Only

# CYP19A1 Polyclonal antibody, PBS Only

Catalog Number: 16554-1-PBS

Featured Product



## Basic Information

**Catalog Number:**

16554-1-PBS

**Size:**

100ug, Concentration: 1 mg/ml by Nanodrop;

**Source:**

Rabbit

**Isotype:**

IgG

**Immunogen Catalog Number:**

AG9765

**GenBank Accession Number:**

BC022896

**GeneID (NCBI):**

1588

**UNIPROT ID:**

P11511

**Full Name:**

cytochrome P450, family 19, subfamily A, polypeptide 1

**Calculated MW:**

20 kDa, 25 kDa, 58 kDa

**Observed MW:**

55-58 kDa

**Purification Method:**

Antigen affinity purification

## Applications

**Tested Applications:**

WB, IHC, IF/ICC, IF-P, Indirect ELISA

**Species Specificity:**

human, mouse, rat

## Background Information

CYP19A1(Cytochrome P450 19A1) is also named as ARO1(aromatase), CYAR, CYP19, estrogen synthase and belongs to the cytochrome P450 family. It is a terminal enzyme which transforms irreversibly androgens into estrogens and it is present in the endoplasmic reticulum of numerous tissues(PMID:16406261). The gene encodes a protein with the molecular weight between 46 kDa and 69 kDa(PMID:8129748) and the protein can be glycosylated, but the level of glycosylation does not seem to be essential for CYP19A1 activity(PMID:12606587). Brain aromatase may be neuroprotective by increasing the local estrogen levels in injured neurons so that genetic variation in the brain aromatase gene may modify the risk for AD(PMID:16767510).

## Storage

**Storage:**

Store at -80°C.

**Storage Buffer:**

PBS only, pH7.3

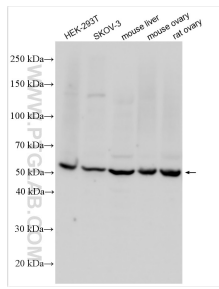
For technical support and original validation data for this product please contact:

T: 1 (888) 4PTGLAB (1-888-478-4522) (toll free in USA), or 1(312) 455-8498 (outside USA)

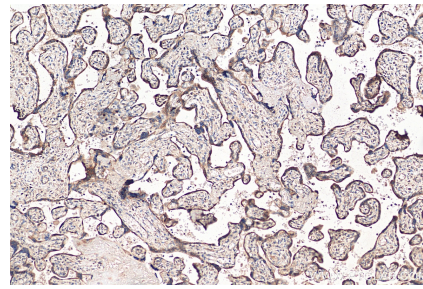
E: proteintech@ptglab.com  
W: ptglab.com

This product is exclusively available under Proteintech Group brand and is not available to purchase from any other manufacturer.

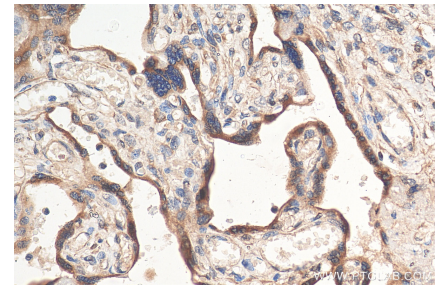
## Selected Validation Data



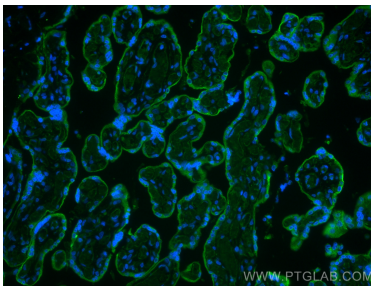
Various lysates were subjected to SDS PAGE followed by western blot with 16554-1-AP (CYP19A1 antibody) at dilution of 1:1000 incubated at room temperature for 1.5 hours. This data was developed using the same antibody clone with 16554-1-PBS in a different storage buffer formulation.



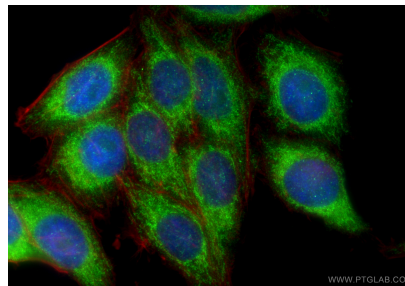
Immunohistochemical analysis of paraffin-embedded human placenta tissue slide using 16554-1-AP (CYP19A1 antibody) at dilution of 1:200 (under 10x lens). Heat mediated antigen retrieval with Tris-EDTA buffer (pH 9.0). This data was developed using the same antibody clone with 16554-1-PBS in a different storage buffer formulation.



Immunohistochemical analysis of paraffin-embedded human placenta tissue slide using 16554-1-AP (CYP19A1 antibody) at dilution of 1:200 (under 40x lens). Heat mediated antigen retrieval with Tris-EDTA buffer (pH 9.0). This data was developed using the same antibody clone with 16554-1-PBS in a different storage buffer formulation.



Immunofluorescent analysis of (4% PFA) fixed human placenta tissue using CYP19A1 antibody (16554-1-AP) at dilution of 1:200 and CoraLite®488-Conjugated AffiniPure Goat Anti-Rabbit IgG(H+L). This data was developed using the same antibody clone with 16554-1-PBS in a different storage buffer formulation.



Immunofluorescent analysis of (4% PFA) fixed HepG2 cells using CYP19A1 antibody (16554-1-AP) at dilution of 1:400 and CoraLite®488-Conjugated Goat Anti-Rabbit IgG(H+L) (SA00013-2), CL594-Phalloidin (red). This data was developed using the same antibody clone with 16554-1-PBS in a different storage buffer formulation.