

For Research Use Only

ARSF Polyclonal antibody

Catalog Number: 16561-1-AP



Basic Information

Catalog Number: 16561-1-AP	GenBank Accession Number: BC022389	Purification Method: Antigen affinity purification
Size: 150ul , Concentration: 850 µg/ml by Nanodrop;	GeneID (NCBI): 416	Recommended Dilutions: WB 1:500-1:1000
Source: Rabbit	Full Name: arylsulfatase F	
Isotype: IgG	Calculated MW: 590 aa, 66 kDa	
Immunogen Catalog Number: AG9790	Observed MW: 66 kDa	

Applications

Tested Applications: WB, ELISA	Positive Controls: WB : COS-7 cells,
Species Specificity: Monkey	

Background Information

Arylsulfatase F (ARSF) is located on the X-chromosome and belongs to the sulfatase family. ARSF exhibits arylsulfatase activity towards the artificial substrate 4-methylumbelliferyl sulfate. ARSF expression is enhanced in the brain, kidney, and skin. The molecular weight of ARSF is 66 kDa.

Storage

Storage:
Store at -20°C. Stable for one year after shipment.
Storage Buffer:
PBS with 0.02% sodium azide and 50% glycerol pH 7.3.
Aliquoting is unnecessary for -20°C storage

*** 20ul sizes contain 0.1% BSA

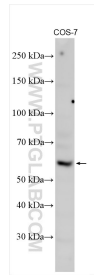
For technical support and original validation data for this product please contact:

T: 1 (888) 4PTGLAB (1-888-478-4522) (toll free in USA), or 1(312) 455-8498 (outside USA)

E: proteintech@ptglab.com
W: ptglab.com

This product is exclusively available under Proteintech Group brand and is not available to purchase from any other manufacturer.

Selected Validation Data



COS-7 cells were subjected to SDS PAGE followed by western blot with 16561-1-AP (ARSF antibody) at dilution of 1:800 incubated at room temperature for 1.5 hours.