

For Research Use Only

# HAO2 Polyclonal antibody

Catalog Number: 16563-1-AP

1 Publications



## Basic Information

Catalog Number:

16563-1-AP

Size:

150ul, Concentration: 550 ug/ml by Nanodrop;

Source:

Rabbit

Isotype:

IgG

Immunogen Catalog Number:

AG9838

GenBank Accession Number:

BC020863

GeneID (NCBI):

51179

UNIPROT ID:

Q9NYQ3

Full Name:

hydroxyacid oxidase 2 (long chain)

Calculated MW:

351 aa, 39 kDa

Observed MW:

35-40 kDa

Purification Method:

Antigen affinity purification

Recommended Dilutions:

WB 1:5000-1:50000

IF/ICC 1:200-1:800

## Applications

Tested Applications:

WB, IF/ICC, ELISA

Cited Applications:

IHC

Species Specificity:

human, mouse, rat

Cited Species:

human

Positive Controls:

WB : HEK-293 cells, mouse kidney tissue, HepG2 cells, L02 cells, MCF-7 cells, rat kidney tissue

IF/ICC : HepG2 cells,

## Notable Publications

Author	Pubmed ID	Journal	Application
Li Zhang	38961491	Arthritis Res Ther	IHC

## Storage

Storage:

Store at -20°C. Stable for one year after shipment.

Storage Buffer:

PBS with 0.02% sodium azide and 50% glycerol, pH7.3

Aliquoting is unnecessary for -20°C storage

\*\*\* 20ul sizes contain 0.1% BSA

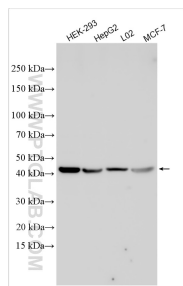
For technical support and original validation data for this product please contact:

T: 1 (888) 4PTGLAB (1-888-478-4522) (toll free in USA), or 1(312) 455-8498 (outside USA)

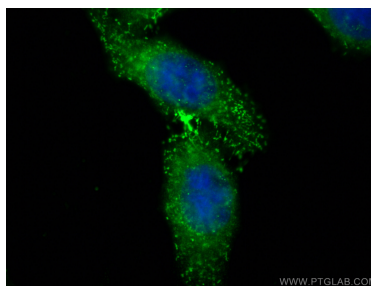
E: [proteintech@ptglab.com](mailto:proteintech@ptglab.com)  
W: [ptglab.com](http://ptglab.com)

This product is exclusively available under Proteintech Group brand and is not available to purchase from any other manufacturer.

## Selected Validation Data



Various lysates were subjected to SDS PAGE followed by western blot with 16563-1-AP (HA02 antibody) at dilution of 1:10000 incubated at room temperature for 1.5 hours.



Immunofluorescent analysis of (-20°C Ethanol) fixed HepG2 cells using HA02 antibody (16563-1-AP) at dilution of 1:400 and Multi-rAb CoraLite® Plus 488-Goat Anti-Rabbit Recombinant Secondary Antibody (H+L) (RGAR002).