

For Research Use Only

SLFN5 Polyclonal antibody

Catalog Number: 16581-1-AP



Basic Information

Catalog Number: 16581-1-AP	GenBank Accession Number: BC021238	Purification Method: Antigen affinity purification
Size: 150ul , Concentration: 600 ug/ml by Nanodrop;	GeneID (NCBI): 162394	Recommended Dilutions: WB 1:1000-1:6000
Source: Rabbit	UNIPROT ID: Q08AF3	
Isotype: IgG	Full Name: schlafen family member 5	
Immunogen Catalog Number: AG9959	Calculated MW: 338 aa, 38 kDa	
	Observed MW: 90 kDa	

Applications

Tested Applications: WB, ELISA	Positive Controls: WB : A549 cells, LNCaP cells, SKOV-3 cells, T-47D cells
Species Specificity: human	

Background Information

Schlafen family member 5 (SLFN5) is a member of the Schlafen family of proteins, a group of type 1 IFN-inducible proteins. In addition to an AAA (ATPase) domain and a specific SLFN box, the SLFN5 gene contains a helicase domain as well as a nuclear localization sequence, which suggests a role for this protein in transcription-related processes. A growing number of findings suggest that human Schlafen family member 5(SLFN5) plays a key role in malignancy.

Storage

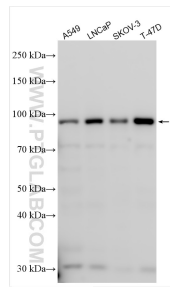
Storage:
Store at -20°C. Stable for one year after shipment.
Storage Buffer:
PBS with 0.02% sodium azide and 50% glycerol pH 7.3.
Aliquoting is unnecessary for -20°C storage

*** 20ul sizes contain 0.1% BSA

For technical support and original validation data for this product please contact:
T: 1 (888) 4PTGLAB (1-888-478-4522) (toll free in USA), or 1(312) 455-8498 (outside USA)
E: proteintech@ptglab.com
W: ptglab.com

This product is exclusively available under Proteintech Group brand and is not available to purchase from any other manufacturer.

Selected Validation Data



Various lysates were subjected to SDS PAGE followed by western blot with 16581-1-AP (SLFN5 antibody) at dilution of 1:3000 incubated at room temperature for 1.5 hours.