

For Research Use Only

MED31 Polyclonal antibody

Catalog Number: 16590-1-AP **1 Publications**



Basic Information

Catalog Number: 16590-1-AP	GenBank Accession Number: BC012539	Purification Method: Antigen affinity purification
Size: 150ul , Concentration: 300 µg/ml by Nanodrop and 133 µg/ml by Bradford method using BSA as the standard;	GeneID (NCBI): 51003	Recommended Dilutions: WB 1:500-1:2000 IF 1:50-1:500
Source: Rabbit	Full Name: mediator complex subunit 31	
Isotype: IgG	Calculated MW: 131 aa, 16 kDa	
Immunogen Catalog Number: AG9008	Observed MW: 16 kDa	

Applications

Tested Applications: IF, WB, ELISA	Positive Controls: WB : mouse testis tissue, human brain tissue
Cited Applications: WB	IF : HepG2 cells,
Species Specificity: human, mouse, rat	
Cited Species: mouse	

Background Information

MED31, also named as SOH1 or CGI-125, is a 131 amino acid protein, which belongs to the Mediator complex subunit 31 family. MED31 localizes in the nucleus. MED31 as a component of the Mediator complex, a coactivator is involved in the regulated transcription of nearly all RNA polymerase II-dependent genes. MED31 functions as a bridge to convey information from gene-specific regulatory proteins to the basal RNA polymerase II transcription machinery.

Notable Publications

Author	Pubmed ID	Journal	Application
Risley Michael D MD	20347762	Dev Biol	WB

Storage

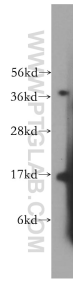
Storage:
Store at -20°C. Stable for one year after shipment.
Storage Buffer:
PBS with 0.02% sodium azide and 50% glycerol pH 7.3.
Aliquoting is unnecessary for -20°C storage

*** 20ul sizes contain 0.1% BSA

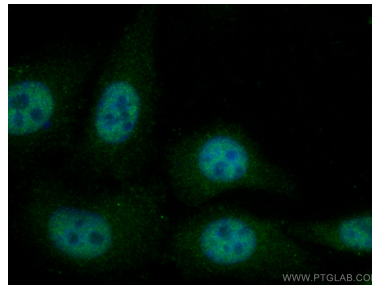
For technical support and original validation data for this product please contact:
T: 1 (888) 4PTGLAB (1-888-478-4522) (toll free in USA), or 1(312) 455-8498 (outside USA)
E: proteintech@ptglab.com
W: ptglab.com

This product is exclusively available under Proteintech Group brand and is not available to purchase from any other manufacturer.

Selected Validation Data



mouse testis tissue were subjected to SDS PAGE followed by western blot with 16590-1-AP (MED31 antibody) at dilution of 1:600 incubated at room temperature for 1.5 hours.



Immunofluorescent analysis of (4% PFA) fixed HepG2 cells using MED31 antibody (16590-1-AP) at dilution of 1:200 and CoraLite®488-Conjugated AffiniPure Goat Anti-Rabbit IgG(H+L).