

For Research Use Only

BATF2 Polyclonal antibody

Catalog Number: 16592-1-AP

Featured Product

1 Publications



Basic Information

Catalog Number: 16592-1-AP	GenBank Accession Number: BC012330	Purification Method: Antigen affinity purification
Size: 150ul , Concentration: 200 µg/ml by Nanodrop and 160 µg/ml by Bradford method using BSA as the standard;	GeneID (NCBI): 116071	Recommended Dilutions: IP 0.5-4.0 ug for IP and 1:200-1:1000 for WB
Source: Rabbit	Full Name: basic leucine zipper transcription factor, ATF-like 2	
Isotype: IgG	Calculated MW: 29 kDa	
Immunogen Catalog Number: AG9551	Observed MW: 29 kDa	

Applications

Tested Applications: IP, ELISA	Positive Controls: IP : HeLa cells,
Cited Applications: WB	
Species Specificity: human	
Cited Species: human	

Background Information

Notable Publications

Author	Pubmed ID	Journal	Application
Yiqun Zhang	35246006	Bioengineered	WB

Storage

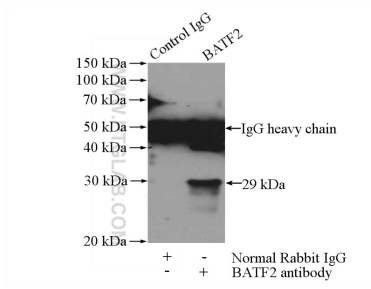
Storage:
Store at -20°C. Stable for one year after shipment.
Storage Buffer:
PBS with 0.02% sodium azide and 50% glycerol pH 7.3.
Aliquoting is unnecessary for -20°C storage

*** 20ul sizes contain 0.1% BSA

For technical support and original validation data for this product please contact:
T: 1 (888) 4PTGLAB (1-888-478-4522) (toll free in USA), or 1(312) 455-8498 (outside USA)
E: proteintech@ptglab.com
W: ptglab.com

This product is exclusively available under Proteintech Group brand and is not available to purchase from any other manufacturer.

Selected Validation Data



IP Result of anti-BATF2 (IP:16592-1-AP, 3 μ g;
Detection:16592-1-AP 1:300) with HeLa cells lysate
1200 μ g.