

# SDS Polyclonal antibody

Catalog Number: 16594-1-AP

## Basic Information

<b>Catalog Number:</b> 16594-1-AP	<b>GenBank Accession Number:</b> BC020750	<b>Purification Method:</b> Antigen affinity purification
<b>Size:</b> 150ul , Concentration: 700 µg/ml by Nanodrop;	<b>GeneID (NCBI):</b> 10993	<b>Recommended Dilutions:</b> WB 1:1000-1:4000 IHC 1:50-1:500
<b>Source:</b> Rabbit	<b>Full Name:</b> serine dehydratase	
<b>Isotype:</b> IgG	<b>Calculated MW:</b> 218 aa, 23 kDa	
<b>Immunogen Catalog Number:</b> AG9704	<b>Observed MW:</b> 35 kDa; 70 kDa	

## Applications

<b>Tested Applications:</b> IHC, WB, ELISA	<b>Positive Controls:</b>
<b>Species Specificity:</b> human, mouse	<b>WB :</b> mouse liver tissue, <b>IHC :</b> human liver tissue,
<b>Note-IHC: suggested antigen retrieval with TE buffer pH 9.0; (*) Alternatively, antigen retrieval may be performed with citrate buffer pH 6.0</b>	

## Background Information

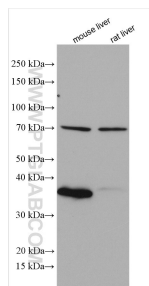
L-Serine dehydratase (SDS ; SDH) catalyzes the pyridoxal phosphate (PLP) dependent deamination of L-serine to yield pyruvate. In mammals, SDH is found predominantly in the liver. Extensive studies have been carried out on SDH from rat and the enzyme has been found to play an important role in gluconeogenesis; its activity is induced by the consumption of high-protein diets, starvation and other treatments. The enzyme exists as a dimer of identical subunits, with each subunit exhibiting a bilobal architecture. (PMID: 25380533, PMID: 21878319, PMID: 14646100)

## Storage

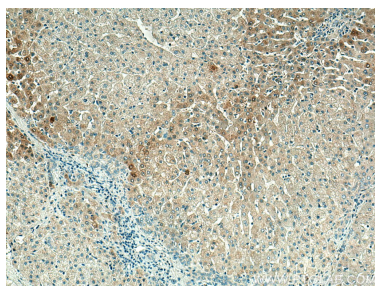
**Storage:**  
Store at -20°C. Stable for one year after shipment.  
**Storage Buffer:**  
PBS with 0.02% sodium azide and 50% glycerol pH 7.3.  
Aliquoting is unnecessary for -20°C storage

\*\*\* 20ul sizes contain 0.1% BSA

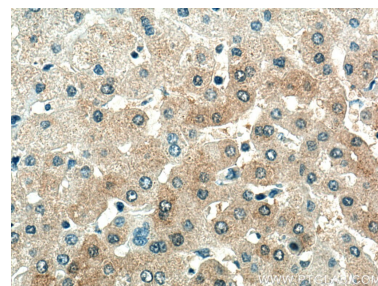
## Selected Validation Data



Various lysates were subjected to SDS PAGE followed by western blot with 16594-1-AP (SDS antibody) at dilution of 1:2000 incubated at room temperature for 1.5 hours.



Immunohistochemical analysis of paraffin-embedded human liver tissue slide using 16594-1-AP (SDS antibody) at dilution of 1:200 (under 10x lens). Heat mediated antigen retrieval with Tris-EDTA buffer (pH 9.0).



Immunohistochemical analysis of paraffin-embedded human liver tissue slide using 16594-1-AP (SDS antibody) at dilution of 1:200 (under 40x lens). Heat mediated antigen retrieval with Tris-EDTA buffer (pH 9.0).