

For Research Use Only

SPTLC3 Polyclonal antibody

Catalog Number: 16600-1-AP **1 Publications**



Basic Information

Catalog Number: 16600-1-AP	GenBank Accession Number: BC020656	Purification Method: Antigen affinity purification
Size: 150ul , Concentration: 500 µg/ml by Nanodrop;	GeneID (NCBI): 55304	Recommended Dilutions: WB 1:1000-1:4000 IF 1:50-1:500
Source: Rabbit	Full Name: serine palmitoyltransferase, long chain base subunit 3	
IsoType: IgG	Calculated MW: 175 aa, 20 kDa	
Immunogen Catalog Number: AG9760	Observed MW: 62 kDa	

Applications

Tested Applications: IF, WB, ELISA	Positive Controls: WB : HepG2 cells, mouse liver tissue IF : HepG2 cells,
Cited Applications: WB	
Species Specificity: human, mouse	
Cited Species: human	

Background Information

Notable Publications

Author	Pubmed ID	Journal	Application
Zelin Tian	33163282	Am J Cancer Res	WB

Storage

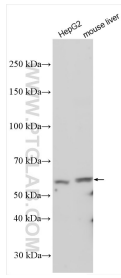
Storage:
Store at -20°C. Stable for one year after shipment.
Storage Buffer:
PBS with 0.02% sodium azide and 50% glycerol pH 7.3.
Aliquoting is unnecessary for -20°C storage

*** 20ul sizes contain 0.1% BSA

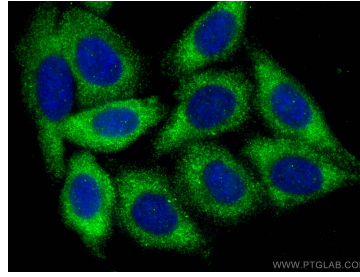
For technical support and original validation data for this product please contact:
T: 1 (888) 4PTGLAB (1-888-478-4522) (toll free in USA), or 1(312) 455-8498 (outside USA)
E: proteintech@ptglab.com
W: ptglab.com

This product is exclusively available under Proteintech Group brand and is not available to purchase from any other manufacturer.

Selected Validation Data



Various lysates were subjected to SDS PAGE followed by western blot with 16600-1-AP (SPTLC3 antibody) at dilution of 1:2000 incubated at room temperature for 1.5 hours.



Immunofluorescent analysis of (-20°C Ethanol) fixed HepG2 cells using SPTLC3 antibody (16600-1-AP) at dilution of 1:200 and CoraLite® 488-Conjugated AffiniPure Goat Anti-Rabbit IgG(H+L).