

For Research Use Only

PGCP Polyclonal antibody

Catalog Number: 16601-1-AP **2 Publications**



Basic Information

Catalog Number: 16601-1-AP	GenBank Accession Number: BC020689	Purification Method: Antigen affinity purification
Size: 150ul , Concentration: 350 µg/ml by Nanodrop and 240 µg/ml by Bradford method using BSA as the standard;	GeneID (NCBI): 10404	Recommended Dilutions: WB 1:500-1:1000 IP 0.5-4.0 ug for IP and 1:500-1:1000 for WB
Source: Rabbit	Full Name: plasma glutamate carboxypeptidase	IF 1:20-1:200
Isotype: IgG	Calculated MW: 472 aa, 52 kDa	
Immunogen Catalog Number: AG9770	Observed MW: 65-70 kDa	

Applications

Tested Applications: IF, IP, WB, ELISA	Positive Controls:
Cited Applications: WB	WB: L02 cells, human placenta tissue, human plasma tissue, mouse kidney tissue
Species Specificity: human, mouse	IP: mouse kidney tissue,
Cited Species: human, rat	IF: L02 cells,

Background Information

PGCP(plasma glutamate carboxypeptidase) is also named as LCH1,CPQ and belongs to the peptidase M28 family. It may play an important role in the hydrolysis of circulating peptides. It catalyzes more efficiently the hydrolysis of dipeptides with unsubstituted terminals into amino acids. It is a proteinase that acts on the unsubstituted N- and C-termini of dipeptides. It has been suggested that this PGCP is involved in the release of thyroxine(PMID:20951214). Human PGCP is a metalloproteinase with five potential glycosylation sites, whose activity depends on dimerization and it can be detected a band of 65-72kd in FRTL-5 cells which is pro-PGCP(PMID:22127294). It can be N-glycosylated(PMID:10206990). It has the pro-form of 60-65 kDa and mature form of 55 kDa(PMID:20951214).

Notable Publications

Author	Pubmed ID	Journal	Application
Mengyan Hu	37402721	Nat Commun	WB
Tiemei Li	37246283	Adv Sci (Weinh)	WB

Storage

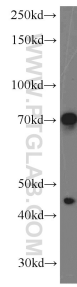
Storage:
Store at -20°C. Stable for one year after shipment.
Storage Buffer:
PBS with 0.02% sodium azide and 50% glycerol pH 7.3.
Aliquoting is unnecessary for -20°C storage

*** 20ul sizes contain 0.1% BSA

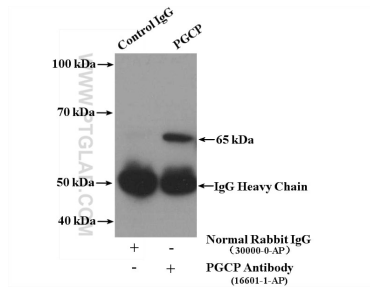
For technical support and original validation data for this product please contact:
T: 1 (888) 4PTGLAB (1-888-478-4522) (toll free in USA), or 1(312) 455-8498 (outside USA)
E: proteintech@ptglab.com
W: ptglab.com

This product is exclusively available under Proteintech Group brand and is not available to purchase from any other manufacturer.

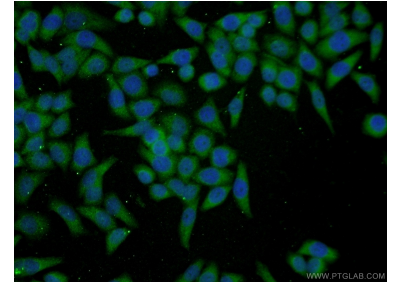
Selected Validation Data



L02 cells were subjected to SDS PAGE followed by western blot with 16601-1-AP (PGCP antibody) at dilution of 1:600 incubated at room temperature for 1.5 hours.



IP Result of anti-PGCP (IP:16601-1-AP, 4ug; Detection:16601-1-AP 1:500) with mouse kidney tissue lysate 4000ug.



Immunofluorescent analysis of L02 cells using 16601-1-AP (PGCP antibody) at dilution of 1:50 and Alexa Fluor 488-conjugated AffiniPure Goat Anti-Rabbit IgG(H+L).