

For Research Use Only

LIPH Polyclonal antibody

Catalog Number: 16602-1-AP

Featured Product

6 Publications



Basic Information

Catalog Number:
16602-1-AP

Size:
150ul, Concentration: 500 µg/ml by Nanodrop and 327 µg/ml by Bradford method using BSA as the standard;

Source:
Rabbit

Isotype:
IgG

Immunogen Catalog Number:
AG9775

GenBank Accession Number:
BC064941

GeneID (NCBI):
200879

Full Name:
Lipase, member H

Calculated MW:
51 kDa

Observed MW:
50-55 kDa

Purification Method:
Antigen affinity purification

Recommended Dilutions:
WB 1:500-1:1000
IP 0.5-4.0 µg for IP and 1:500-1:1000 for WB
IHC 1:20-1:200
IF 1:10-1:100

Applications

Tested Applications:
IF, IHC, IP, WB, ELISA

Cited Applications:
ELISA, IHC, WB

Species Specificity:
human, mouse, rat

Cited Species:
human

Note-IHC: suggested antigen retrieval with TE buffer pH 9.0; (*) Alternatively, antigen retrieval may be performed with citrate buffer pH 6.0

Positive Controls:

WB: A549 cells, COLO 320 cells, mouse lung tissue

IP: mouse lung tissue,

IHC: human pancreas tissue,

IF: A549 cells,

Background Information

LIPH (Lipase member H) is also named as LPDLR, MPAPLA1, PLA1B. It is a phosphatidic acid-selective phospholipase A1 (PLA1) that produces 2-acyl lysophosphatidic acid (LPA) and belongs to the AB hydrolase superfamily and Lipase family. LIPH has a 12-residue lid region, which likely covers a catalytic pocket, and 4 potential N-linked glycosylation sites. Defects in LIPH are the cause of hypotrichosis type 7 (HYPT7).

Notable Publications

Author	Pubmed ID	Journal	Application
Hisako Ishimine	26341494	Tumour Biol	IHC
Yixiao Zhang	32618099	J Cell Mol Med	WB
Yasuhiro Seki	24380866	Biochem Biophys Res Commun	ELISA, WB, IHC

Storage

Storage:

Store at -20°C. Stable for one year after shipment.

Storage Buffer:

PBS with 0.02% sodium azide and 50% glycerol pH 7.3.

Aliquoting is unnecessary for -20°C storage

*** 20ul sizes contain 0.1% BSA

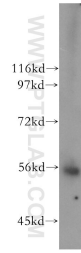
For technical support and original validation data for this product please contact:

T: 1 (888) 4PTGLAB (1-888-478-4522) (toll free in USA), or 1(312) 455-8498 (outside USA)

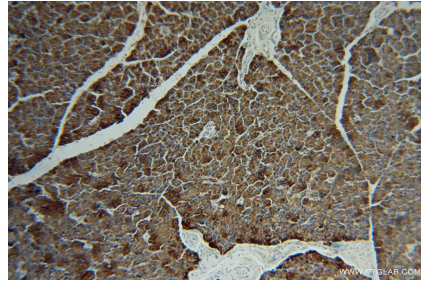
E: proteintech@ptglab.com
W: ptglab.com

This product is exclusively available under Proteintech Group brand and is not available to purchase from any other manufacturer.

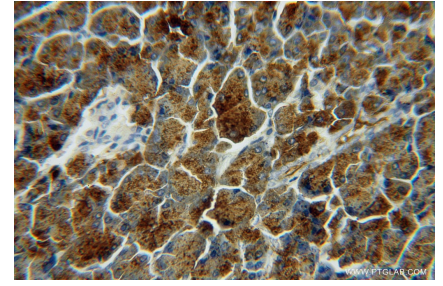
Selected Validation Data



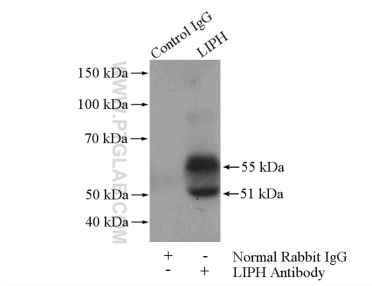
A549 cells were subjected to SDS PAGE followed by western blot with 16602-1-AP (LIPH antibody) at dilution of 1:500 incubated at room temperature for 1.5 hours.



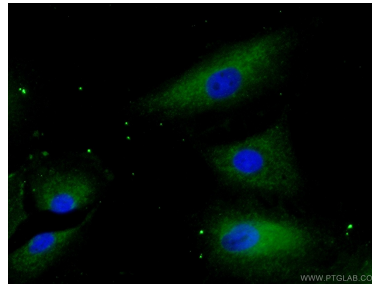
Immunohistochemical analysis of paraffin-embedded human pancreas using 16602-1-AP (LIPH antibody) at dilution of 1:50 (under 10x lens).



Immunohistochemical analysis of paraffin-embedded human pancreas using 16602-1-AP (LIPH antibody) at dilution of 1:50 (under 40x lens).



IP Result of anti-LIPH (IP:16602-1-AP, 4ug; Detection:16602-1-AP 1:500) with mouse lung tissue lysate 4000ug.



Immunofluorescent analysis of (-20°C Ethanol) fixed A549 cells using 16602-1-AP (LIPH antibody) at dilution of 1:25 and Alexa Fluor 488-conjugated AffiniPure Goat Anti-Rabbit IgG(H+L).