

For Research Use Only

# ATAD3A/B Polyclonal antibody

Catalog Number: 16610-1-AP

Featured Product

14 Publications



## Basic Information

### Catalog Number:

16610-1-AP

### Size:

150ul, Concentration: 750 ug/ml by Nanodrop and 293 ug/ml by Bradford method using BSA as the standard;

### Source:

Rabbit

### Isotype:

IgG

### Immunogen Catalog Number:

AG9836

### GenBank Accession Number:

BC002542

### GeneID (NCBI):

83858

### UNIPROT ID:

Q5T9A4

### Full Name:

ATPase family, AAA domain containing 3B

### Calculated MW:

72 kDa

### Observed MW:

68 kDa

### Purification Method:

Antigen affinity purification

### Recommended Dilutions:

WB 1:500-1:1000

IP 0.5-4.0 ug for 1.0-3.0 mg of total protein lysate

IHC 1:50-1:500

## Applications

### Tested Applications:

WB, IP, IHC, ELISA

### Cited Applications:

WB, IF, IP, ColP

### Species Specificity:

human, mouse, rat

### Cited Species:

human, mouse, rat

**Note-IHC: suggested antigen retrieval with TE buffer pH 9.0; (\*) Alternatively, antigen retrieval may be performed with citrate buffer pH 6.0**

### Positive Controls:

WB: MAF cells,

IP: NCCIT cell,

IHC: human skin cancer tissue,

## Background Information

ATAD3 (ATPase family AAA Domain-containing protein 3) is a mitochondrial membrane bound ATPase whose function has not yet been discovered but its role is essential for embryonic development. The analysis of the cellular properties of ATAD3A and ATAD3B in different human cancer cell lines shows on the contrary that they can present anti-proliferative and chemoresistant properties. This antibody can detect both ATAD3A and ATAD3B.

## Notable Publications

Author	Pubmed ID	Journal	Application
Chao Hu	33130824	Cell Death Dis	WB
Ayesha Sen	36344526	Nat Commun	WB, ColP
Susana Peralta	31727539	Mol Genet Metab	WB

## Storage

### Storage:

Store at -20°C. Stable for one year after shipment.

### Storage Buffer:

PBS with 0.02% sodium azide and 50% glycerol pH 7.3.

Aliquoting is unnecessary for -20°C storage

\*\*\* 20ul sizes contain 0.1% BSA

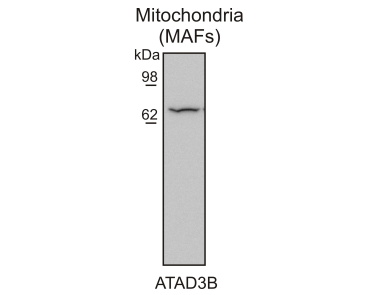
For technical support and original validation data for this product please contact:

T: 1 (888) 4PTGLAB (1-888-478-4522) (toll free in USA), or 1(312) 455-8498 (outside USA)

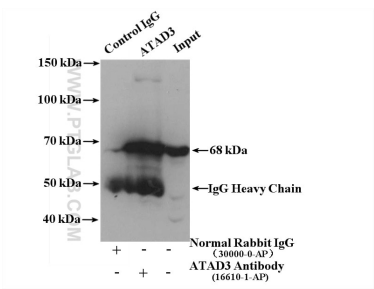
E: [proteintech@ptglab.com](mailto:proteintech@ptglab.com)  
W: [ptglab.com](http://ptglab.com)

This product is exclusively available under Proteintech Group brand and is not available to purchase from any other manufacturer.

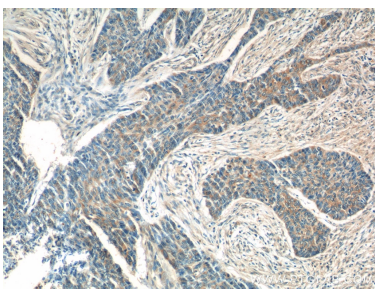
Selected Validation Data



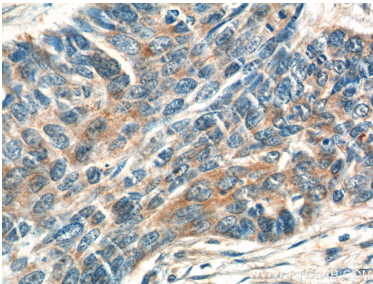
WB result of ATAD3B antibody (16610-1-AP, 1:500) with mitochondrial lysates from MAFs cells (by Maria Eugenia Soriano of UNIVERSITY OF PADUA, ITALY).



IP result of anti-ATAD3A/B (IP:16610-1-AP, 4ug; Detection:16610-1-AP 1:1000) with NCCIT cell lysate 3200 ug.



Immunohistochemical analysis of paraffin-embedded human skin cancer tissue slide using 16610-1-AP (ATAD3 antibody at dilution of 1:200 (under 10x lens).



Immunohistochemical analysis of paraffin-embedded human skin cancer tissue slide using 16610-1-AP (ATAD3 antibody at dilution of 1:200 (under 40x lens).