

For Research Use Only

MRPL46 Polyclonal antibody

Catalog Number: 16611-1-AP **1 Publications**



Basic Information

Catalog Number: 16611-1-AP	GenBank Accession Number: BC017883	Purification Method: Antigen affinity purification
Size: 150ul, Concentration: 600 µg/ml by Nanodrop and 267 µg/ml by Bradford method using BSA as the standard;	GeneID (NCBI): 26589	Recommended Dilutions: WB 1:1000-1:6000 IHC 1:20-1:200 IF 1:50-1:500
Source: Rabbit	Full Name: mitochondrial ribosomal protein L46	
Isotype: IgG	Calculated MW: 279 aa, 32 kDa	
Immunogen Catalog Number: AG9837	Observed MW: 32 kDa	

Applications

Tested Applications: IF, IHC, WB, ELISA	Positive Controls:
Cited Applications: WB	WB: A549 cells, HeLa cells, mouse brain tissue, mouse heart tissue
Species Specificity: human, mouse, rat	IHC: human heart tissue, human kidney tissue
Cited Species: human	IF: HepG2 cells,
Note-IHC: suggested antigen retrieval with TE buffer pH 9.0; (*) Alternatively, antigen retrieval may be performed with citrate buffer pH 6.0	

Background Information

Notable Publications

Author	Pubmed ID	Journal	Application
Ying Shu	36314841	EMBO J	WB

Storage

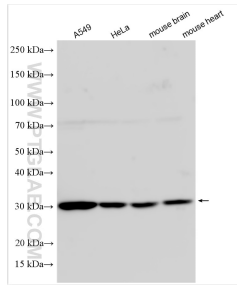
Storage:
Store at -20°C. Stable for one year after shipment.
Storage Buffer:
PBS with 0.02% sodium azide and 50% glycerol pH 7.3.
Aliquoting is unnecessary for -20°C storage

*** 20ul sizes contain 0.1% BSA

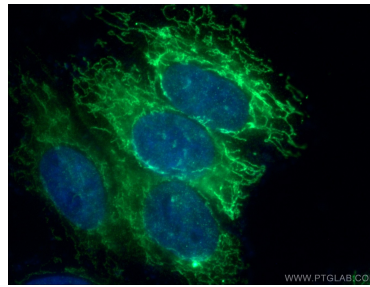
For technical support and original validation data for this product please contact:
T: 1 (888) 4PTGLAB (1-888-478-4522) (toll free in USA), or 1(312) 455-8498 (outside USA) E: proteintech@ptglab.com W: ptglab.com

This product is exclusively available under Proteintech Group brand and is not available to purchase from any other manufacturer.

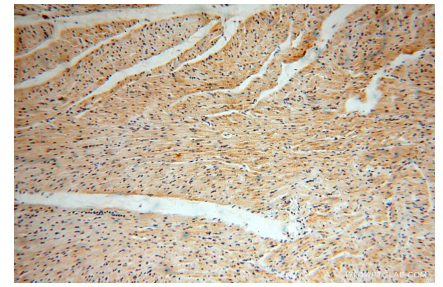
Selected Validation Data



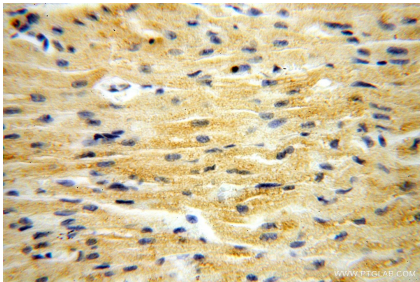
Various lysates were subjected to SDS PAGE followed by western blot with 16611-1-AP (MRPL46 antibody) at dilution of 1:3000 incubated at room temperature for 1.5 hours.



Immunofluorescent analysis of (4% PFA) fixed HepG2 cells using 16611-1-AP (MRPL46 antibody) at dilution of 1:50 and Alexa Fluor 488-conjugated AffiniPure Goat Anti-Rabbit IgG(H+L).



Immunohistochemical analysis of paraffin-embedded human heart using 16611-1-AP (MRPL46 antibody) at dilution of 1:50 (under 10x lens).



Immunohistochemical analysis of paraffin-embedded human heart using 16611-1-AP (MRPL46 antibody) at dilution of 1:50 (under 40x lens).