

For Research Use Only

# BCL2L13 Polyclonal antibody

Catalog Number: 16612-1-AP

Featured Product

18 Publications



## Basic Information

<b>Catalog Number:</b> 16612-1-AP	<b>GenBank Accession Number:</b> BC003032	<b>Purification Method:</b> Antigen affinity purification
<b>Size:</b> 150ul , Concentration: 750 µg/ml by Nanodrop;	<b>GeneID (NCBI):</b> 23786	<b>Recommended Dilutions:</b> WB 1:1000-1:6000 IP 0.5-4.0 ug for 1.0-3.0 mg of total protein lysate IHC 1:50-1:500
<b>Source:</b> Rabbit	<b>Full Name:</b> BCL2-like 13 (apoptosis facilitator)	
<b>Isotype:</b> IgG	<b>Calculated MW:</b> 485 aa, 53 kDa	
<b>Immunogen Catalog Number:</b> AG9841	<b>Observed MW:</b> 85 kDa	

## Applications

**Tested Applications:**  
IHC, IP, WB, ELISA

**Cited Applications:**  
IF, IHC, WB

**Species Specificity:**  
human, mouse, rat

**Cited Species:**  
human, rat, mouse

**Note-IHC: suggested antigen retrieval with TE buffer pH 9.0; (\*) Alternatively, antigen retrieval may be performed with citrate buffer pH 6.0**

**Positive Controls:**

**WB:** HeLa cells, mouse heart tissue, HepG2 cells, rat heart tissue

**IP:** mouse heart tissue,

**IHC:** human pancreas cancer tissue,

## Background Information

BCL2L13/MIL1 gene encodes a mitochondrially-localized protein with conserved B-cell lymphoma 2 homology motifs. BCL2L13 gene is highest expressed in heart, placenta and pancreas. The encoded protein Bcl-rambo may promote the activation of caspase-3 and apoptosis. The Bcl-rambo cell death activity was induced by its membrane-anchored C-terminal domain and not by the Bcl-2 homology region (PMID: 11262395). Multivariate analysis demonstrated that high expression of BCL2L13 was an independent prognostic factor for in childhood acute lymphoblastic leukemia (PMID: 20109966).

## Notable Publications

Author	Pubmed ID	Journal	Application
Qiong Fang	36094724	Metab Brain Dis	IHC
Liping Ju	30352689	Biochem Biophys Res Commun	WB
Simone C da Silva Rosa	33044904	Autophagy	WB

## Storage

**Storage:**

Store at -20°C. Stable for one year after shipment.

**Storage Buffer:**

PBS with 0.02% sodium azide and 50% glycerol pH 7.3.

Aliquoting is unnecessary for -20°C storage

\*\*\* 20ul sizes contain 0.1% BSA

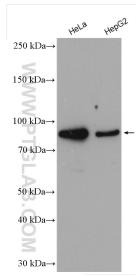
For technical support and original validation data for this product please contact:

T: 1 (888) 4PTGLAB (1-888-478-4522) (toll free in USA), or 1(312) 455-8498 (outside USA)

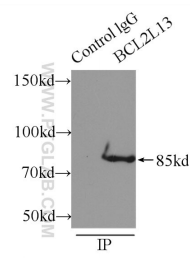
E: proteintech@ptglab.com  
W: ptglab.com

This product is exclusively available under Proteintech Group brand and is not available to purchase from any other manufacturer.

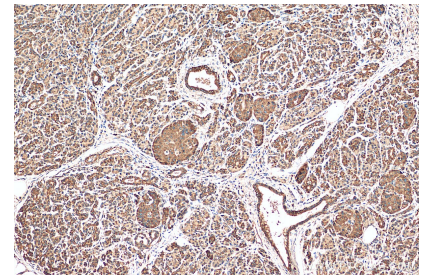
## Selected Validation Data



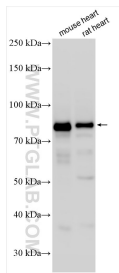
Various lysates were subjected to SDS PAGE followed by western blot with 16612-1-AP (BCL2L13 antibody) at dilution of 1:3000 incubated at room temperature for 1.5 hours.



IP Result of anti-BCL2L13 (IP:16612-1-AP, 3ug; Detection:16612-1-AP 1:100) with mouse heart tissue lysate 8000ug.



Immunohistochemical analysis of paraffin-embedded human pancreas cancer tissue slide using 16612-1-AP (BCL2L13 antibody) at dilution of 1:200 (under 10x lens). Heat mediated antigen retrieval with Tris-EDTA buffer (pH 9.0).



Various lysates were subjected to SDS PAGE followed by western blot with 16612-1-AP (BCL2L13 antibody) at dilution of 1:3000 incubated at room temperature for 1.5 hours.