

For Research Use Only

ME1 Polyclonal antibody, PBS Only

Catalog Number: 16619-1-PBS

Featured Product



Basic Information

Catalog Number:

16619-1-PBS

Size:

100ug, Concentration: 1 mg/ml by Nanodrop;

Source:

Rabbit

Isotype:

IgG

Immunogen Catalog Number:

AG9916

GenBank Accession Number:

BC025246

GeneID (NCBI):

4199

UNIPROT ID:

P48163

Full Name:

malic enzyme 1, NADP(+)-dependent, cytosolic

Calculated MW:

572 aa, 64 kDa

Observed MW:

55-64 kDa

Purification Method:

Antigen affinity purification

Applications

Tested Applications:

WB, IHC, IF/ICC, IP, Indirect ELISA

Species Specificity:

human, mouse, rat

Background Information

ME1(NADP-dependent malic enzyme) belongs to the malic enzymes family. This malic enzyme catalyzes the reversible oxidative decarboxylation of malate and is a link between the glycolytic pathway and the citric acid cycle. The reaction is L-malate plus NADP(+) to form pyruvate, CO₂, and NADPH. The predicted protein contains 572 amino acids and has a calculated molecular mass of 64.1 kDa.

Storage

Storage:

Store at -80°C.

Storage Buffer:

PBS only, pH7.3

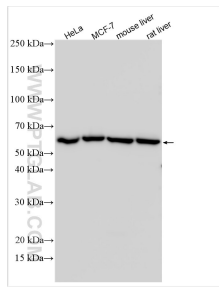
For technical support and original validation data for this product please contact:

T: 1 (888) 4PTGLAB (1-888-478-4522) (toll free in USA), or 1(312) 455-8498 (outside USA)

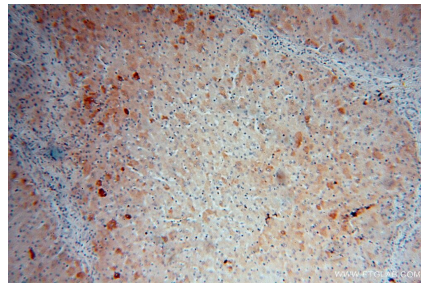
E: proteintech@ptglab.com
W: ptglab.com

This product is exclusively available under Proteintech Group brand and is not available to purchase from any other manufacturer.

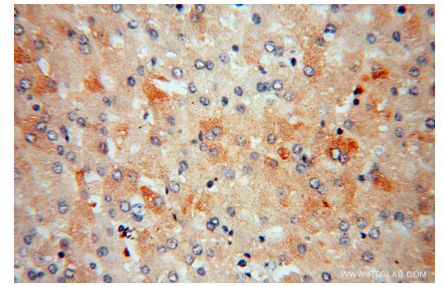
Selected Validation Data



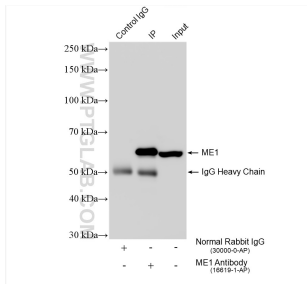
Various lysates were subjected to SDS PAGE followed by western blot with 16619-1-AP (ME1 antibody) at dilution of 1:6000 incubated at room temperature for 1.5 hours. This data was developed using the same antibody clone with 16619-1-PBS in a different storage buffer formulation.



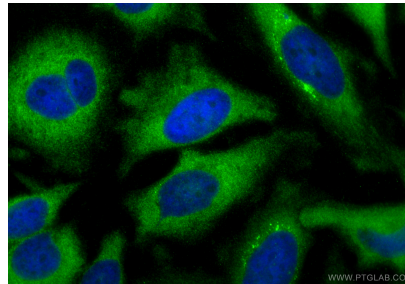
Immunohistochemical analysis of paraffin-embedded human liver using 16619-1-AP (ME1 antibody) at dilution of 1:100 (under 10x lens). This data was developed using the same antibody clone with 16619-1-PBS in a different storage buffer formulation.



Immunohistochemical analysis of paraffin-embedded human liver using 16619-1-AP (ME1 antibody) at dilution of 1:100 (under 40x lens). This data was developed using the same antibody clone with 16619-1-PBS in a different storage buffer formulation.



IP result of anti-ME1 (IP:16619-1-AP, 4ug; Detection:16619-1-AP 1:2000) with mouse liver tissue lysate 2400 ug. This data was developed using the same antibody clone with 16619-1-PBS in a different storage buffer formulation.



Immunofluorescent analysis of (-20°C Ethanol) fixed HeLa cells using ME1 antibody (16619-1-AP) at dilution of 1:200 and CoraLite®488-Conjugated Goat Anti-Rabbit IgG(H+L) (SA00013-2). This data was developed using the same antibody clone with 16619-1-PBS in a different storage buffer formulation.