

For Research Use Only

TMLHE Polyclonal antibody

Catalog Number: 16621-1-AP

Featured Product

3 Publications



Basic Information

Catalog Number: 16621-1-AP	GenBank Accession Number: BC025269	Purification Method: Antigen affinity purification
Size: 150ul , Concentration: 300 µg/ml by Nanodrop;	GeneID (NCBI): 55217	Recommended Dilutions: WB 1:500-1:1000
Source: Rabbit	Full Name: trimethyllysine hydroxylase, epsilon	
Isotype: IgG	Calculated MW: 376 aa, 44 kDa	
Immunogen Catalog Number: AG9919	Observed MW: 44 kDa	

Applications

Tested Applications: WB, ELISA	Positive Controls: WB : human liver tissue, rat kidney tissue, Jurkat cells
Cited Applications: WB	
Species Specificity: human, mouse, rat	
Cited Species: human, mouse	

Background Information

Trimethyllysine dioxygenase (TMLHE) encodes the first enzyme in carnitine biosynthesis, N6-trimethyllysine dioxygenase (TMLD) and enzyme deficiency was suggested to be a risk factor for ASD.

Notable Publications

Author	Pubmed ID	Journal	Application
Aileen Mendoza	34506728	Cell Chem Biol	WB
Chengheng Liao	32690540	Cancer Discov	WB
Zhigang Xie	26832401	Cell Rep	WB

Storage

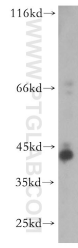
Storage:
Store at -20°C. Stable for one year after shipment.
Storage Buffer:
PBS with 0.02% sodium azide and 50% glycerol pH 7.3.
Aliquoting is unnecessary for -20°C storage

*** 20ul sizes contain 0.1% BSA

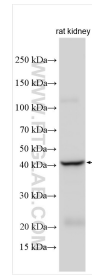
For technical support and original validation data for this product please contact:
T: 1 (888) 4PTGLAB (1-888-478-4522) (toll free in USA), or 1(312) 455-8498 (outside USA)
E: proteintech@ptglab.com
W: ptglab.com

This product is exclusively available under Proteintech Group brand and is not available to purchase from any other manufacturer.

Selected Validation Data



human liver tissue were subjected to SDS PAGE followed by western blot with 16621-1-AP (TMLHE antibody) at dilution of 1:500 incubated at room temperature for 1.5 hours.



rat kidney tissue were subjected to SDS PAGE followed by western blot with 16621-1-AP (TMLHE antibody) at dilution of 1:2000 incubated at room temperature for 1.5 hours.