

For Research Use Only

# TMLHE Polyclonal antibody, PBS Only

Catalog Number: 16621-1-PBS

Featured Product



## Basic Information

Catalog Number:

16621-1-PBS

Size:

100ug, Concentration: 1 mg/ml by Nanodrop;

Source:

Rabbit

Isotype:

IgG

Immunogen Catalog Number:

AG9919

GenBank Accession Number:

BC025269

GeneID (NCBI):

55217

UNIPROT ID:

Q9NVH6

Full Name:

trimethyllysine hydroxylase, epsilon

Calculated MW:

376 aa, 44 kDa

Observed MW:

44 kDa

Purification Method:

Antigen affinity purification

## Applications

Tested Applications:

WB, IHC, Indirect ELISA

Species Specificity:

human, mouse, rat

## Background Information

Trimethyllysine dioxygenase (TMLHE) encodes the first enzyme in carnitine biosynthesis, N6-trimethyllysine dioxygenase (TMLD) and enzyme deficiency was suggested to be a risk factor for ASD.

## Storage

Storage:

Store at -80°C.

Storage Buffer:

PBS Only

For technical support and original validation data for this product please contact:

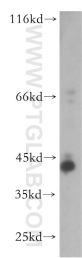
T: 1 (888) 4PTGLAB (1-888-478-4522) (toll free in USA), or 1(312) 455-8498 (outside USA)

E: [proteintech@ptglab.com](mailto:proteintech@ptglab.com)

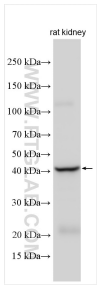
W: [ptglab.com](http://ptglab.com)

This product is exclusively available under Proteintech Group brand and is not available to purchase from any other manufacturer.

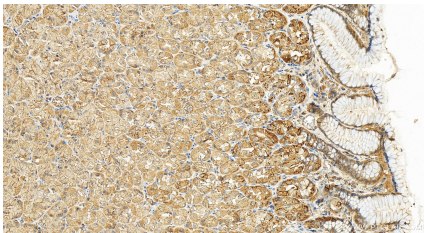
## Selected Validation Data



human liver tissue were subjected to SDS PAGE followed by western blot with 16621-1-AP (TMLHE antibody) at dilution of 1:500 incubated at room temperature for 1.5 hours. This data was developed using the same antibody clone with 16621-1-PBS in a different storage buffer formulation.



rat kidney tissue were subjected to SDS PAGE followed by western blot with 16621-1-AP (TMLHE antibody) at dilution of 1:2000 incubated at room temperature for 1.5 hours. This data was developed using the same antibody clone with 16621-1-PBS in a different storage buffer formulation.



Immunohistochemical analysis of paraffin-embedded human stomach tissue slide using 16621-1-AP (TMLHE antibody) at dilution of 1:200 (under 20x lens). Heat mediated antigen retrieval with Tris-EDTA buffer (pH 9.0). This data was developed using the same antibody clone with 16621-1-PBS in a different storage buffer formulation.