

For Research Use Only

EPYC Polyclonal antibody, PBS Only

Catalog Number: 16626-1-PBS



Basic Information

Catalog Number:

16626-1-PBS

Size:

100ug, Concentration: 1 mg/ml by Nanodrop;

Source:

Rabbit

Isotype:

IgG

Immunogen Catalog Number:

AG9929

GenBank Accession Number:

BC030958

GeneID (NCBI):

1833

UNIPROT ID:

Q99645

Full Name:

epiphycan

Calculated MW:

322 aa, 37 kDa

Observed MW:

37kDa, 62 kDa

Purification Method:

Antigen affinity purification

Applications

Tested Applications:

WB, Indirect ELISA

Species Specificity:

human, mouse, rat

Background Information

EPYC (Epiphycan), also known as DSPG3. It is demonstrated that DSPG3 is expressed in cartilage, as well as ligament and placental tissues (PMID: 8975717). May have a role in bone formation and also in establishing the ordered structure of cartilage through matrix organization. The molecular weight of EPYC is 37 kDa, it is also reported the molecular weight is 62 kDa (PMID: 38184732).

Storage

Storage:

Store at -80°C.

Storage Buffer:

PBS only, pH7.3

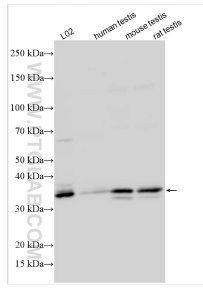
For technical support and original validation data for this product please contact:

T: 1 (888) 4PTGLAB (1-888-478-4522) (toll free in USA), or 1(312) 455-8498 (outside USA)

E: proteintech@ptglab.com
W: ptglab.com

This product is exclusively available under Proteintech Group brand and is not available to purchase from any other manufacturer.

Selected Validation Data



L02 cells were subjected to SDS PAGE followed by western blot with 16626-1-AP (EPYC antibody) at dilution of 1:4000 incubated at room temperature for 1.5 hours. This data was developed using the same antibody clone with 16626-1-PBS in a different storage buffer formulation.