

For Research Use Only

RTF2 Polyclonal antibody

Catalog Number: 16633-1-AP

Featured Product

2 Publications



Basic Information

| | | |
|---|--|--|
| Catalog Number: 16633-1-AP | GenBank Accession Number: BC003359 | Purification Method: Antigen affinity purification |
| Size: 150ul, Concentration: 800 µg/ml by Nanodrop and 427 µg/ml by Bradford method using BSA as the standard; | GeneID (NCBI): 51507 | Recommended Dilutions: WB 1:1000-1:4000 IP 0.5-4.0 µg for 1.0-3.0 mg of total protein lysate IF 1:50-1:500 |
| Source: Rabbit | Full Name: chromosome 20 open reading frame 43 | |
| Isotype: IgG | Calculated MW: 34 kDa | |
| Immunogen Catalog Number: AG9972 | Observed MW: 35-40 kDa | |

Applications

| | |
|--|---|
| Tested Applications: IF, IP, WB, ELISA | Positive Controls: WB : MCF-7 cells, HeLa cells IP : HeLa cells, IF : HeLa cells, |
| Cited Applications: WB | |
| Species Specificity: human, mouse, rat | |
| Cited Species: human, mouse | |

Background Information

The function of C20orf43 remains largely unknown. Catalog#16633-1-AP is a rabbit polyclonal antibody raised against the full-length of human C20orf43. The MW of this protein is 40 kDa, and this antibody specially recognises the 40 kDa protein.

Notable Publications

| Author | Pubmed ID | Journal | Application |
|-------------------|-----------|----------|-------------|
| Molly C Kottemann | 29290612 | Mol Cell | WB |
| Brooke A Conti | 36993543 | bioRxiv | WB |

Storage

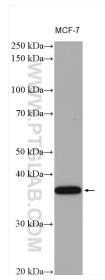
Storage:
Store at -20°C. Stable for one year after shipment.
Storage Buffer:
PBS with 0.02% sodium azide and 50% glycerol pH 7.3.
Aliquoting is unnecessary for -20°C storage

*** 20ul sizes contain 0.1% BSA

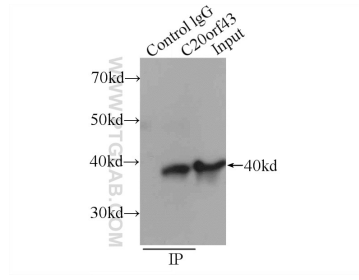
For technical support and original validation data for this product please contact:
T: 1 (888) 4PTGLAB (1-888-478-4522) (toll free in USA), or 1(312) 455-8498 (outside USA)
E: proteintech@ptglab.com
W: ptglab.com

This product is exclusively available under Proteintech Group brand and is not available to purchase from any other manufacturer.

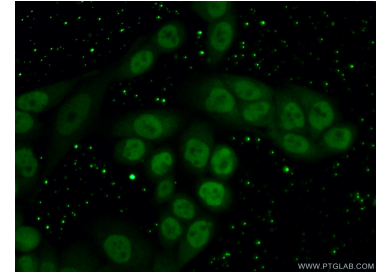
Selected Validation Data



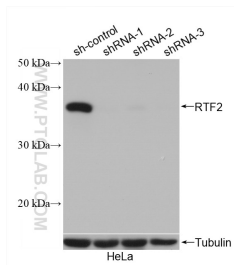
MCF-7 cells were subjected to SDS PAGE followed by western blot with 16633-1-AP (RTF2 antibody) at dilution of 1:2000 incubated at room temperature for 1.5 hours.



IP Result of anti-C20orf43 (IP:16633-1-AP, 3 μ g; Detection:16633-1-AP 1:500) with HeLa cells lysate 3440 μ g.



Immunofluorescent analysis of (10% Formaldehyde) fixed HeLa cells using 16633-1-AP (C20orf43 antibody) at dilution of 1:50 and Alexa Fluor 488-conjugated AffiniPure Goat Anti-Rabbit IgG(H+L).



WB result of RTF2 antibody (16633-1-AP; 1:1000; incubated at room temperature for 1.5 hours) with sh-Control and sh-RTF2 transfected HeLa cells.