

For Research Use Only

RTF2 Polyclonal antibody, PBS Only

Catalog Number: 16633-1-PBS

Featured Product



Basic Information

Catalog Number:

16633-1-PBS

Size:

100ug, Concentration: 1 mg/ml by Nanodrop;

Source:

Rabbit

Isotype:

IgG

Immunogen Catalog Number:

AG9972

GenBank Accession Number:

BC003359

GeneID (NCBI):

51507

UNIPROT ID:

Q9BY42

Full Name:

chromosome 20 open reading frame 43

Calculated MW:

34 kDa

Observed MW:

35-40 kDa

Purification Method:

Antigen affinity purification

Applications

Tested Applications:

WB, IF/ICC, IP, Indirect ELISA

Species Specificity:

human, mouse, rat

Background Information

The function of C20orf43 remains largely unknown. Catalog#16633-1-AP is a rabbit polyclonal antibody raised against the full-length of human C20orf43. The MW of this protein is 40 kDa, and this antibody specially recognises the 40 kDa protein.

Storage

Storage:

Store at -80°C.

Storage Buffer:

PBS only, pH7.3

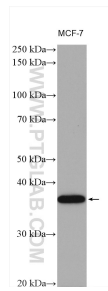
For technical support and original validation data for this product please contact:

T: 1 (888) 4PTGLAB (1-888-478-4522) (toll free in USA), or 1(312) 455-8498 (outside USA)

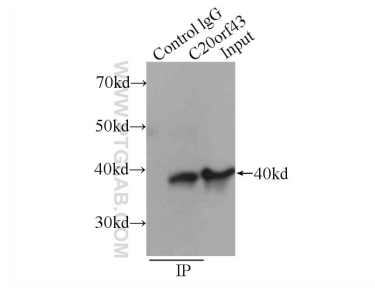
E: proteintech@ptglab.com
W: ptglab.com

This product is exclusively available under Proteintech Group brand and is not available to purchase from any other manufacturer.

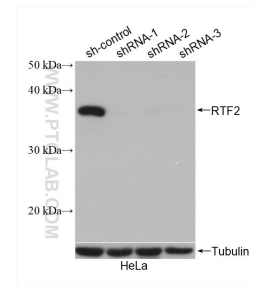
Selected Validation Data



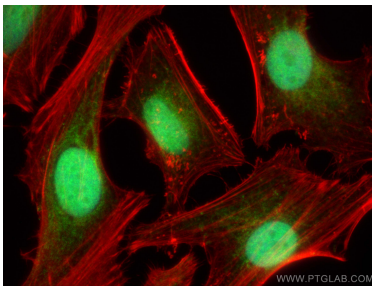
MCF-7 cells were subjected to SDS PAGE followed by western blot with 16633-1-AP (RTF2 antibody) at dilution of 1:2000 incubated at room temperature for 1.5 hours. This data was developed using the same antibody clone with 16633-1-PBS in a different storage buffer formulation.



IP result of anti-RTF2 (IP:16633-1-AP, 3ug; Detection:16633-1-AP 1:500) with HeLa cells lysate 3440ug. This data was developed using the same antibody clone with 16633-1-PBS in a different storage buffer formulation.



WB result of RTF2 antibody (16633-1-AP; 1:1000; incubated at room temperature for 1.5 hours) with sh-Control and sh-RTF2 transfected HeLa cells. This data was developed using the same antibody clone with 16633-1-PBS in a different storage buffer formulation.



Immunofluorescent analysis of (4% PFA) fixed HeLa cells using RTF2 antibody (16633-1-AP) at dilution of 1:400 and Coralite®488-Conjugated AffiniPure Goat Anti-Rabbit IgG(H+L), CL594-phalloidin (red). This data was developed using the same antibody clone with 16633-1-PBS in a different storage buffer formulation.