

For Research Use Only

ASL Polyclonal antibody

Catalog Number: 16645-1-AP **5 Publications**



Basic Information

Catalog Number: 16645-1-AP	GenBank Accession Number: BC008195	Purification Method: Antigen affinity purification
Size: 150ul , Concentration: 600 ug/ml by Nanodrop;	GeneID (NCBI): 435	Recommended Dilutions: WB 1:1000-1:6000 IHC 1:100-1:400
Source: Rabbit	UNIPROT ID: P04424	
Isotype: IgG	Full Name: argininosuccinate lyase	
Immunogen Catalog Number: AG10007	Calculated MW: 55 kDa	
	Observed MW: 49 kDa	

Applications

Tested Applications: WB, IHC, ELISA	Positive Controls: WB : mouse kidney tissue, mouse liver tissue, rat kidney tissue, rat liver tissue IHC : human liver cancer tissue,
Cited Applications: WB, IHC	
Species Specificity: human, mouse, rat	
Cited Species: human, mouse	
Note-IHC: suggested antigen retrieval with TE buffer pH 9.0; (*) Alternatively, antigen retrieval may be performed with citrate buffer pH 6.0	

Background Information

Argininosuccinate lyase (ASL), one of the significant UC enzymes, catalyzes argininosuccinate cleavage to generate arginine and fumarate. Arginine is then catalyzed by arginase to ornithine and polyamines, which are found to promote cancer cell proliferation and growth. Importantly, ASL ectopic expression is closely associated with poor prognosis of colorectal cancer, hepatocellular. ASL is a member of the aspartase/fumarase superfamily. Enzymes of this superfamily share similar tetrameric structure and active site, though the sequence identities between different members are quite low (less than 20%). Members of this superfamily have been recognised as drug targets for microbial infections. ASL is a 464-amino-acid enzyme with a molecular mass of 49.7 kDa. (PMID: 22386318 PMID: 31018905)

Notable Publications

Author	Pubmed ID	Journal	Application
Yin Cao	30901224	J Proteome Res	WB,IHC
Wenxiang Zhang	32029232	Mol Metab	WB
Rui Li	39413790	Cell Metab	WB

Storage

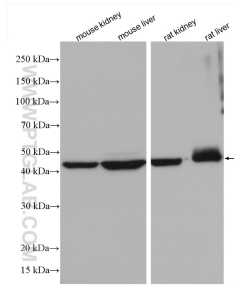
Storage:
Store at -20°C. Stable for one year after shipment.
Storage Buffer:
PBS with 0.02% sodium azide and 50% glycerol pH 7.3.
Aliquoting is unnecessary for -20°C storage

*** 20ul sizes contain 0.1% BSA

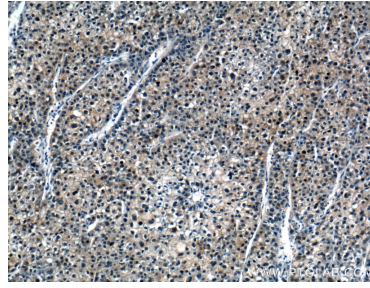
For technical support and original validation data for this product please contact:
T: 1 (888) 4PTGLAB (1-888-478-4522) (toll free in USA), or 1(312) 455-8498 (outside USA)
E: proteintech@ptglab.com
W: ptglab.com

This product is exclusively available under Proteintech Group brand and is not available to purchase from any other manufacturer.

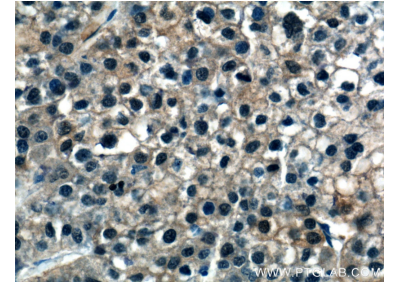
Selected Validation Data



Various lysates were subjected to SDS PAGE followed by western blot with 16645-1-AP (ASL antibody) at dilution of 1:3000 incubated at room temperature for 1.5 hours.



Immunohistochemical analysis of paraffin-embedded human liver cancer tissue slide using 16645-1-AP (ASL Antibody) at dilution of 1:200 (under 10x lens).



Immunohistochemical analysis of paraffin-embedded human liver cancer tissue slide using 16645-1-AP (ASL Antibody) at dilution of 1:200 (under 40x lens).