

For Research Use Only

RPL28 Polyclonal antibody

Catalog Number: 16649-1-AP **9 Publications**



Basic Information

Catalog Number: 16649-1-AP	GenBank Accession Number: BC010173	Purification Method: Antigen affinity purification
Size: 150ul , Concentration: 300 µg/ml by Nanodrop and 233 µg/ml by Bradford method using BSA as the standard;	GeneID (NCBI): 6158	Recommended Dilutions: WB 1:500-1:3000 IF 1:10-1:100
Source: Rabbit	Full Name: ribosomal protein L28	
Isotype: IgG	Calculated MW: 137 aa, 16 kDa	
Immunogen Catalog Number: AG10036	Observed MW: 16 kDa	

Applications

Tested Applications: IF, WB, ELISA	Positive Controls: WB : HeLa cells, NIH/3T3 cells
Cited Applications: FC, IF, WB	IF : HepG2 cells,
Species Specificity: human, mouse, rat	
Cited Species: human, mouse	

Background Information

Notable Publications

Author	Pubmed ID	Journal	Application
Adrien Labriet	31506518	Sci Rep	
Patricia Altea-Manzano	36327975	Mol Cell	WB
Qianxing Zou	34825148	iScience	WB, IF

Storage

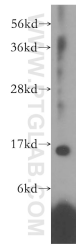
Storage:
Store at -20°C. Stable for one year after shipment.
Storage Buffer:
PBS with 0.02% sodium azide and 50% glycerol pH 7.3.
Aliquoting is unnecessary for -20°C storage

*** 20ul sizes contain 0.1% BSA

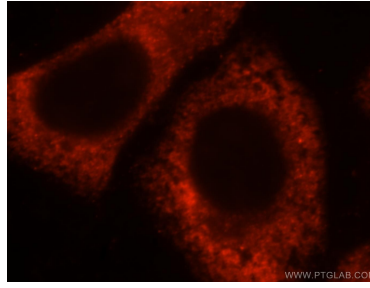
For technical support and original validation data for this product please contact:
T: 1 (888) 4PTGLAB (1-888-478-4522) (toll free in USA), or 1(312) 455-8498 (outside USA)
E: proteintech@ptglab.com
W: ptglab.com

This product is exclusively available under Proteintech Group brand and is not available to purchase from any other manufacturer.

Selected Validation Data



HeLa cells were subjected to SDS PAGE followed by western blot with 16649-1-AP (RPL28 antibody) at dilution of 1:1000 incubated at room temperature for 1.5 hours.



Immunofluorescent analysis of HepG2 cells, using RPL28 antibody 16649-1-AP at 1:25 dilution and Rhodamine-labeled goat anti-rabbit IgG (red).