

For Research Use Only

PRPS1L1 Polyclonal antibody

Catalog Number: 16657-1-AP



Basic Information

Catalog Number:

16657-1-AP

Size:

150ul , Concentration: 400 ug/ml by Nanodrop;

Source:

Rabbit

Isotype:

IgG

Immunogen Catalog Number:

AG10111

GenBank Accession Number:

BC062797

GeneID (NCBI):

221823

UNIPROT ID:

P21108

Full Name:

phosphoribosyl pyrophosphate synthetase 1-like 1

Calculated MW:

318 aa, 35 kDa

Observed MW:

35 kDa

Purification Method:

Antigen affinity purification

Recommended Dilutions:

WB 1:500-1:2000

Applications

Tested Applications:

WB, ELISA

Species Specificity:

human, mouse

Positive Controls:

WB : human testis tissue, NIH/3T3 cells, mouse testis tissue

Storage

Storage:

Store at -20°C. Stable for one year after shipment.

Storage Buffer:

PBS with 0.02% sodium azide and 50% glycerol pH 7.3.

Aliquoting is unnecessary for -20°C storage

*** 20ul sizes contain 0.1% BSA

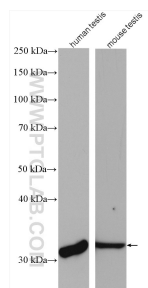
For technical support and original validation data for this product please contact:

T: 1 (888) 4PTGLAB (1-888-478-4522) (toll free in USA), or 1(312) 455-8498 (outside USA)

E: proteintech@ptglab.com
W: ptglab.com

This product is exclusively available under Proteintech Group brand and is not available to purchase from any other manufacturer.

Selected Validation Data



Various lysates were subjected to SDS PAGE followed by western blot with 16657-1-AP (PRPS1L1 antibody) at dilution of 1:1000 incubated at room temperature for 1.5 hours.