

For Research Use Only

GTDC1 Polyclonal antibody

Catalog Number: 16666-1-AP

1 Publications



Basic Information

Catalog Number:

16666-1-AP

Size:

150ul, Concentration: 350 ug/ml by Nanodrop and 240 ug/ml by Bradford method using BSA as the standard;

Source:

Rabbit

Isotype:

IgG

Immunogen Catalog Number:

AG10145

GenBank Accession Number:

BC061699

GeneID (NCBI):

79712

UNIPROT ID:

Q4AE62

Full Name:

glycosyltransferase-like domain containing 1

Calculated MW:

292 aa, 34 kDa, 53 kDa

Purification Method:

Antigen affinity purification

Recommended Dilutions:

IHC 1:50-1:500

IF/ICC 1:200-1:800

Applications

Tested Applications:

IHC, IF/ICC, ELISA

Cited Applications:

WB

Species Specificity:

human, mouse

Note-IHC: suggested antigen retrieval with TE buffer pH 9.0; (*) Alternatively, antigen retrieval may be performed with citrate buffer pH 6.0

Positive Controls:

IHC : human liver tissue, human kidney tissue, human ovary tissue, human spleen tissue, human testis tissue, mouse testis tissue

IF/ICC : HepG2 cells,

Background Information

GTDC1 (glycosyltransferase-like domain containing 1) encodes a putative glycosyltransferase, whose expression is particularly enriched in the nervous system. GTDC1 glycosylation finely tunes a myriad of neural functions, such as neurite outgrowth, axon guidance, synaptogenesis, membrane excitability, neurotransmission, and neuroinflammation (PMID: 38605125).

Notable Publications

Author	Pubmed ID	Journal	Application
Eric Kenney	32704134	Sci Rep	WB

Storage

Storage:

Store at -20°C. Stable for one year after shipment.

Storage Buffer:

PBS with 0.02% sodium azide and 50% glycerol pH 7.3.

Aliquoting is unnecessary for -20°C storage

*** 20ul sizes contain 0.1% BSA

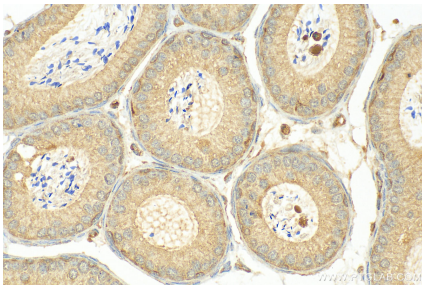
For technical support and original validation data for this product please contact:

T: 1 (888) 4PTGLAB (1-888-478-4522) (toll free in USA), or 1(312) 455-8498 (outside USA)

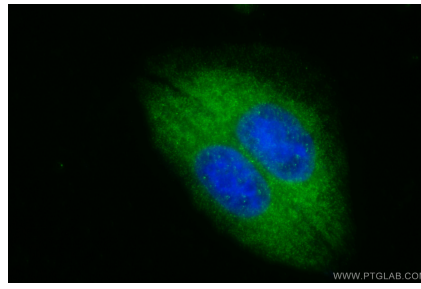
E: proteintech@ptglab.com
W: ptglab.com

This product is exclusively available under Proteintech Group brand and is not available to purchase from any other manufacturer.

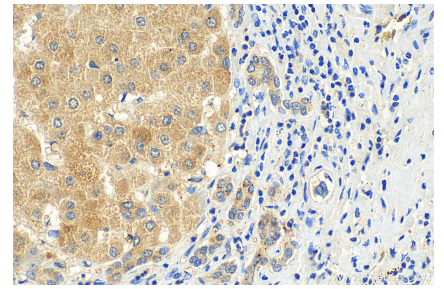
Selected Validation Data



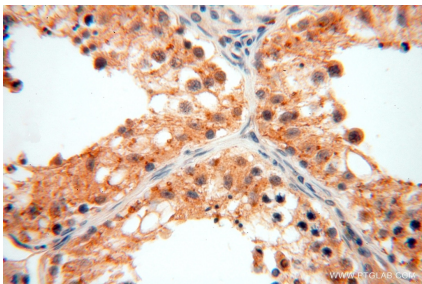
Immunohistochemical analysis of paraffin-embedded mouse testis tissue slide using 16666-1-AP (GTDC1 antibody) at dilution of 1:200 (under 40x lens).



Immunofluorescent analysis of (-20°C Ethanol) fixed HepG2 cells using GTDC1 antibody (16666-1-AP) at dilution of 1:400 and CoraLite® 488-Conjugated Goat Anti-Rabbit IgG(H+L) (SA00013-2).



Immunohistochemical analysis of paraffin-embedded human liver tissue slide using 16666-1-AP (GTDC1 antibody) at dilution of 1:200 (under 40x lens). Heat mediated antigen retrieval with Tris-EDTA buffer(pH9).



Immunohistochemical analysis of paraffin-embedded human testis using 16666-1-AP (GTDC1 antibody) at dilution of 1:100 (under 40x lens).