

For Research Use Only

# CKAP4 Polyclonal antibody

Catalog Number: 16686-1-AP

48 Publications



## Basic Information

### Catalog Number:

16686-1-AP

### Size:

150ul, Concentration: 400 ug/ml by Nanodrop;

### Source:

Rabbit

### Isotype:

IgG

### Immunogen Catalog Number:

AG10019

### GenBank Accession Number:

BC082972

### GeneID (NCBI):

10970

### UNIPROT ID:

Q07065

### Full Name:

cytoskeleton-associated protein 4

### Calculated MW:

602 aa, 66 kDa

### Observed MW:

63 kDa

### Purification Method:

Antigen affinity purification

### Recommended Dilutions:

WB 1:5000-1:50000

IP 0.5-4.0 ug for 1.0-3.0 mg of total protein lysate

IHC 1:50-1:500

IF/ICC 1:50-1:500

## Applications

### Tested Applications:

WB, IHC, IF/ICC, IP, ELISA

### Cited Applications:

WB, IHC, IF, IP, CoIP

### Species Specificity:

human, mouse, rat

### Cited Species:

human, mouse, rat

**Note-IHC: suggested antigen retrieval with TE buffer pH 9.0; (\*) Alternatively, antigen retrieval may be performed with citrate buffer pH 6.0**

### Positive Controls:

**WB** : A431 cells, rat kidney tissue, HeLa cells, HepG2 cells, NIH/3T3 cells

**IP** : HeLa cells,

**IHC** : human kidney tissue, human liver tissue

**IF/ICC** : HepG2 cells,

## Background Information

CKAP4, also named as Climp-63, is a 63 kDa cytoskeleton-linking membrane protein. It is the partner of triadin. CKAP4 is responsible for this association of triads and microtubules.

## Notable Publications

Author	Pubmed ID	Journal	Application
Gui-Feng Lu	30288057	Onco Targets Ther	WB,IHC
Svenja Zielke	33111629	Autophagy	WB,IF
Michael L van de Weijer	33065021	Mol Cell	WB

## Storage

### Storage:

Store at -20°C. Stable for one year after shipment.

### Storage Buffer:

PBS with 0.02% sodium azide and 50% glycerol pH 7.3.

Aliquoting is unnecessary for -20°C storage

\*\*\* 20ul sizes contain 0.1% BSA

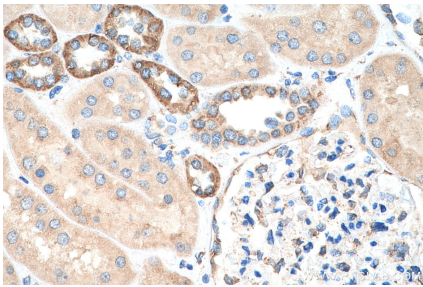
For technical support and original validation data for this product please contact:

T: 1 (888) 4PTGLAB (1-888-478-4522) (toll free in USA), or 1(312) 455-8498 (outside USA)

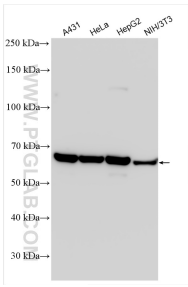
E: [proteintech@ptglab.com](mailto:proteintech@ptglab.com)  
W: [ptglab.com](http://ptglab.com)

This product is exclusively available under Proteintech Group brand and is not available to purchase from any other manufacturer.

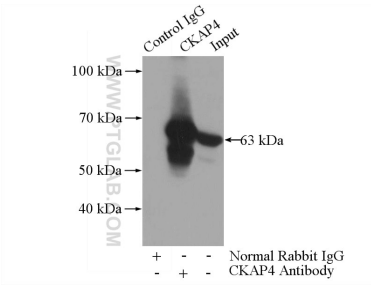
Selected Validation Data



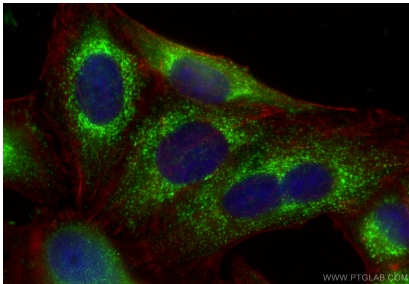
Immunohistochemical analysis of paraffin-embedded human kidney tissue slide using 16686-1-AP (CKAP4 antibody) at dilution of 1:200 (under 40x lens). Heat mediated antigen retrieval with Tris-EDTA buffer (pH 9.0).



Various lysates were subjected to SDS PAGE followed by western blot with 16686-1-AP (CKAP4 antibody) at dilution of 1:40000 incubated at room temperature for 1.5 hours.



IP result of anti-CKAP4 (IP:16686-1-AP, 4ug; Detection:16686-1-AP 1:1000) with HeLa cells lysate 2000ug.



Immunofluorescent analysis of (-20°C Ethanol) fixed HepG2 cells using CKAP4 antibody (16686-1-AP) at dilution of 1:200 and Multi-rAb CoraLite ® Plus 488-Goat Anti-Rabbit Recombinant Secondary Antibody (H+L) (RGAR002), CL594-Phalloidin (red).