

For Research Use Only

ALY Polyclonal antibody

Catalog Number: 16690-1-AP

Featured Product

9 Publications



Basic Information

Catalog Number:

16690-1-AP

Size:

150ul, Concentration: 450 ug/ml by Nanodrop and 267 ug/ml by Bradford method using BSA as the standard;

Source:

Rabbit

Isotype:

IgG

Immunogen Catalog Number:

AG10044

GenBank Accession Number:

BC052302

GeneID (NCBI):

10189

UNIPROT ID:

Q86V81

Full Name:

THO complex 4

Calculated MW:

257 aa, 27 kDa

Observed MW:

27-30 kDa

Purification Method:

Antigen affinity purification

Recommended Dilutions:

WB 1:500-1:1000

IHC 1:50-1:500

IF/ICC 1:300-1:1200

Applications

Tested Applications:

WB, IHC, IF/ICC, ELISA

Cited Applications:

WB, IF, RIP

Species Specificity:

human, mouse, rat

Cited Species:

human, mouse, rat, pig

Note-IHC: suggested antigen retrieval with TE buffer pH 9.0; (*) Alternatively, antigen retrieval may be performed with citrate buffer pH 6.0

Positive Controls:

WB : HeLa cells, HEK-293 cells, A431 cells

IHC : human liver cancer tissue,

IF/ICC : HepG2 cells,

Notable Publications

Author	Pubmed ID	Journal	Application
Lingcai Zhao	36084138	PLoS Pathog	WB,IF
Lin Yang	35559610	ACS Infect Dis	WB
Mi Kyung Park	34879239	Cell Metab	WB

Storage

Storage:

Store at -20°C. Stable for one year after shipment.

Storage Buffer:

PBS with 0.02% sodium azide and 50% glycerol pH 7.3.

Aliquoting is unnecessary for -20°C storage

*** 20ul sizes contain 0.1% BSA

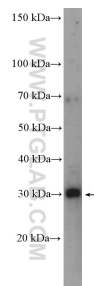
For technical support and original validation data for this product please contact:

T: 1 (888) 4PTGLAB (1-888-478-4522) (toll free in USA), or 1(312) 455-8498 (outside USA)

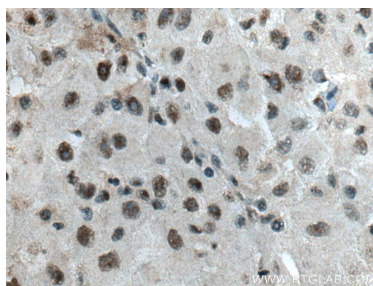
E: proteintech@ptglab.com
W: ptglab.com

This product is exclusively available under Proteintech Group brand and is not available to purchase from any other manufacturer.

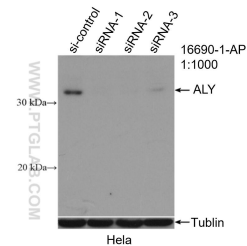
Selected Validation Data



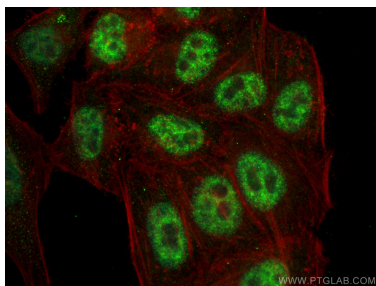
HeLa cells were subjected to SDS PAGE followed by western blot with 16690-1-AP (ALY antibody) at dilution of 1:600 incubated at room temperature for 1.5 hours.



Immunohistochemical analysis of paraffin-embedded human liver cancer tissue slide using 16690-1-AP (ALY antibody) at dilution of 1:200 (under 40x lens). Heat mediated antigen retrieval with Tris-EDTA buffer (pH 9.0).



WB result of ALY antibody (16690-1-AP; 1:1000; incubated at room temperature for 1.5 hours) with sh-Control and sh-ALY transfected HeLa cells.



Immunofluorescent analysis of (4% PFA) fixed HepG2 cells using ALY antibody (16690-1-AP) at dilution of 1:600 and CoraLite®488-Conjugated Goat Anti-Rabbit IgG(H+L) (SA00013-2), CL594-Phalloidin (red).