

For Research Use Only

# PARP11 Polyclonal antibody

Catalog Number: 16692-1-AP



## Basic Information

<b>Catalog Number:</b> 16692-1-AP	<b>GenBank Accession Number:</b> BC017569	<b>Purification Method:</b> Antigen affinity purification
<b>Size:</b> 150ul , Concentration: 450 µg/ml by Nanodrop;	<b>GeneID (NCBI):</b> 57097	<b>Recommended Dilutions:</b> WB 1:500-1:2000 IHC 1:50-1:500
<b>Source:</b> Rabbit	<b>Full Name:</b> poly (ADP-ribose) polymerase family, member 11	
<b>Isotype:</b> IgG	<b>Calculated MW:</b> 331 aa, 39 kDa	
<b>Immunogen Catalog Number:</b> AG10053	<b>Observed MW:</b> 30 kDa	

## Applications

### Tested Applications:

IHC, WB, ELISA

### Species Specificity:

human, mouse

**Note-IHC: suggested antigen retrieval with TE buffer pH 9.0; (\*) Alternatively, antigen retrieval may be performed with citrate buffer pH 6.0**

### Positive Controls:

**WB :** HeLa cells, PC-3 cells, mouse heart tissue, mouse spleen tissue

**IHC :** human kidney tissue, human placenta tissue, human colon tissue, human testis tissue, human skin tissue, human liver tissue, human ovary tissue

## Background Information

PARP11, also named as ARTD11, belongs to the ARTD/PARP family. PARP11 is a mono-ADP-ribosyltransferase that mediates mono-ADP-ribosylation of target proteins. PARP11 plays a role in nuclear envelope stability and nuclear remodeling during spermiogenesis (PMID: 25043379). PARP11 has 4 isoforms with the molecular mass of 28-40 kDa.

## Storage

### Storage:

Store at -20°C. Stable for one year after shipment.

### Storage Buffer:

PBS with 0.02% sodium azide and 50% glycerol pH 7.3.

Aliquoting is unnecessary for -20°C storage

\*\*\* 20ul sizes contain 0.1% BSA

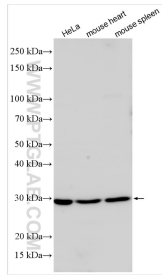
For technical support and original validation data for this product please contact:

T: 1 (888) 4PTGLAB (1-888-478-4522) (toll free in USA), or 1(312) 455-8498 (outside USA)

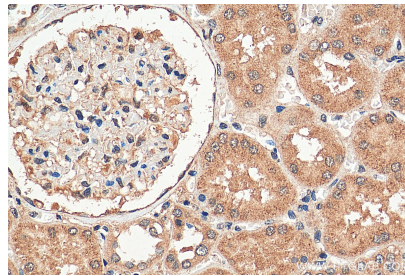
E: [proteintech@ptglab.com](mailto:proteintech@ptglab.com)  
W: [ptglab.com](http://ptglab.com)

This product is exclusively available under Proteintech Group brand and is not available to purchase from any other manufacturer.

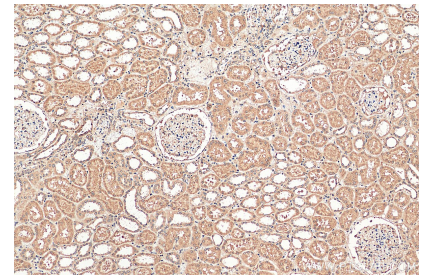
## Selected Validation Data



Various lysates were subjected to SDS PAGE followed by western blot with 16692-1-AP (PARP11 antibody) at dilution of 1:1000 incubated at room temperature for 1.5 hours.



Immunohistochemical analysis of paraffin-embedded human kidney tissue slide using 16692-1-AP (PARP11 antibody) at dilution of 1:200 (under 40x lens). Heat mediated antigen retrieval with Tris-EDTA buffer (pH 9.0).



Immunohistochemical analysis of paraffin-embedded human kidney tissue slide using 16692-1-AP (PARP11 antibody) at dilution of 1:200 (under 10x lens). Heat mediated antigen retrieval with Tris-EDTA buffer (pH 9.0).