

For Research Use Only

# KLHL14 Polyclonal antibody

Catalog Number: 16693-1-AP



## Basic Information

<b>Catalog Number:</b> 16693-1-AP	<b>GenBank Accession Number:</b> BC021267	<b>Purification Method:</b> Antigen affinity purification
<b>Size:</b> 150ul , Concentration: 850 ug/ml by Nanodrop and 407 ug/ml by Bradford method using BSA as the standard;	<b>GeneID (NCBI):</b> 57565	<b>Recommended Dilutions:</b> WB 1:500-1:2000
<b>Source:</b> Rabbit	<b>UNIPROT ID:</b> Q9P2G3	<b>IF/ICC 1:50-1:500</b>
<b>Isotype:</b> IgG	<b>Full Name:</b> kelch-like 14 (Drosophila)	
<b>Immunogen Catalog Number:</b> AG10065	<b>Calculated MW:</b> 44 kDa, 71 kDa	
	<b>Observed MW:</b> 35 kDa, 70 kDa	

## Applications

<b>Tested Applications:</b> WB, IF/ICC, ELISA	<b>Positive Controls:</b>
<b>Species Specificity:</b> human, mouse, rat	<b>WB :</b> PC-3 cells, HepG2 cells, MCF-7 cells
	<b>IF/ICC :</b> HepG2 cells,

## Background Information

Kelch-like protein 14 (KLHL14) is a member of the KLHL family. The kelch motif was initially discovered in Kelch. In this protein there are six copies of the motif. It has been shown for one member that it is related to Galactose Oxidase for which a structure has been solved. Two isoforms of this protein exist - 70kDa and 43kDa.

## Storage

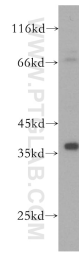
**Storage:**  
Store at -20°C. Stable for one year after shipment.  
**Storage Buffer:**  
PBS with 0.02% sodium azide and 50% glycerol pH 7.3.  
Aliquoting is unnecessary for -20°C storage

\*\*\* 20ul sizes contain 0.1% BSA

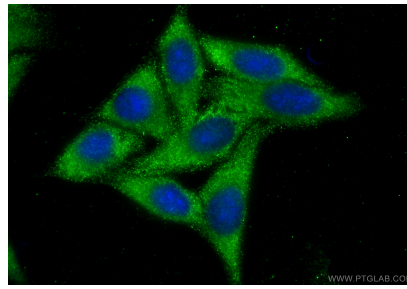
For technical support and original validation data for this product please contact:  
T: 1 (888) 4PTGLAB (1-888-478-4522) (toll free in USA), or 1(312) 455-8498 (outside USA)  
E: [proteintech@ptglab.com](mailto:proteintech@ptglab.com)  
W: [ptglab.com](http://ptglab.com)

This product is exclusively available under Proteintech Group brand and is not available to purchase from any other manufacturer.

## Selected Validation Data



PC-3 cells were subjected to SDS PAGE followed by western blot with 16693-1-AP (KLHL14 antibody) at dilution of 1:1000 incubated at room temperature for 1.5 hours.



Immunofluorescent analysis of (-20°C Ethanol) fixed HepG2 cells using KLHL14 antibody (16693-1-AP) at dilution of 1:200 and CoraLite® 488-Conjugated Goat Anti-Rabbit IgG(H+L) (SA00013-2).