

For Research Use Only

# MTRF1L Polyclonal antibody

Catalog Number: 16694-1-AP **3 Publications**



## Basic Information

<b>Catalog Number:</b> 16694-1-AP	<b>GenBank Accession Number:</b> BC011873	<b>Purification Method:</b> Antigen affinity purification
<b>Size:</b> 150ul, Concentration: 600 µg/ml by Nanodrop and 340 µg/ml by Bradford method using BSA as the standard;	<b>GeneID (NCBI):</b> 54516	<b>Recommended Dilutions:</b> WB 1:500-1:1000
<b>Source:</b> Rabbit	<b>Full Name:</b> mitochondrial translational release factor 1-like	
<b>Isotype:</b> IgG	<b>Calculated MW:</b> 380 aa, 44 kDa	
<b>Immunogen Catalog Number:</b> AG10081	<b>Observed MW:</b> 40-46 kDa	

## Applications

<b>Tested Applications:</b> WB, ELISA	<b>Positive Controls:</b> WB : HEK-293 cells, HeLa cells, HepG2 cells
<b>Cited Applications:</b> WB	
<b>Species Specificity:</b> human, mouse, rat	
<b>Cited Species:</b> mouse, rat	

## Background Information

MTRF1L, also named as Peptide chain release factor 1-like, mitochondrial, is a 380 amino acid protein, which belongs to the prokaryotic/mitochondrial release factor family and locates in the mitochondrial. MTRF1L directs the termination of translation in response to the peptide chain termination codons UAA and UAG. MTRF1L is expressed in skeletal muscle.

## Notable Publications

Author	Pubmed ID	Journal	Application
Takumi Yokokawa	32446358	Biochem Biophys Res Commun	WB
Dongjie Li	36690096	Sci Total Environ	WB
Takumi Yokokawa	30369085	Physiol Rep	WB

## Storage

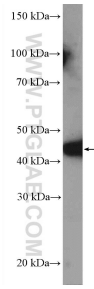
**Storage:**  
Store at -20°C. Stable for one year after shipment.  
**Storage Buffer:**  
PBS with 0.02% sodium azide and 50% glycerol pH 7.3.  
Aliquoting is unnecessary for -20°C storage

\*\*\* 20ul sizes contain 0.1% BSA

For technical support and original validation data for this product please contact:  
T: 1 (888) 4PTGLAB (1-888-478-4522) (toll free in USA), or 1(312) 455-8498 (outside USA)  
E: proteintech@ptglab.com  
W: ptglab.com

This product is exclusively available under Proteintech Group brand and is not available to purchase from any other manufacturer.

## Selected Validation Data



HEK-293 cells were subjected to SDS PAGE followed by western blot with 16694-1-AP (MTRF1L Antibody) at dilution of 1:600 incubated at room temperature for 1.5 hours.