

For Research Use Only

CYP20A1 Polyclonal antibody

Catalog Number: 16702-1-AP

Featured Product



Basic Information

Catalog Number: 16702-1-AP	GenBank Accession Number: BC020616	Purification Method: Antigen affinity purification
Size: 150ul , Concentration: 500 µg/ml by Nanodrop;	GeneID (NCBI): 57404	Recommended Dilutions: WB 1:500-1:2000 IP 0.5-4.0 ug for IP and 1:200-1:1000 for WB
Source: Rabbit	Full Name: cytochrome P450, family 20, subfamily A, polypeptide 1	IHC 1:50-1:500
Isotype: IgG	Calculated MW: 462 aa, 52 kDa	
Immunogen Catalog Number: AG10099	Observed MW: 45-52 kDa	

Applications

Tested Applications:

IHC, IP, WB, ELISA

Species Specificity:

human, mouse, rat

Note-IHC: suggested antigen retrieval with TE buffer pH 9.0; (*) Alternatively, antigen retrieval may be performed with citrate buffer pH 6.0

Positive Controls:

WB: HeLa cells, MCF-7 cells, K-562 cells, mouse lung tissue, HEK-293 cells

IP: MCF-7 cells,

IHC: human liver cancer tissue,

Background Information

Storage

Storage:

Store at -20°C. Stable for one year after shipment.

Storage Buffer:

PBS with 0.02% sodium azide and 50% glycerol pH 7.3.

Aliquoting is unnecessary for -20°C storage

*** 20ul sizes contain 0.1% BSA

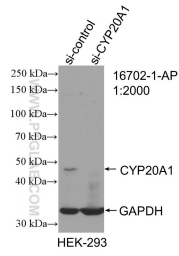
For technical support and original validation data for this product please contact:

T: 1 (888) 4PTGLAB (1-888-478-4522) (toll free in USA), or 1(312) 455-8498 (outside USA)

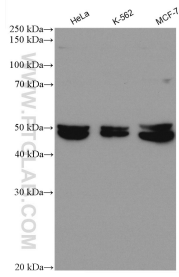
E: proteintech@ptglab.com
W: ptglab.com

This product is exclusively available under Proteintech Group brand and is not available to purchase from any other manufacturer.

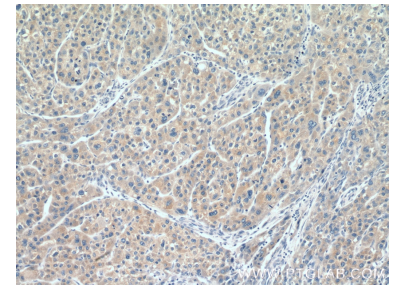
Selected Validation Data



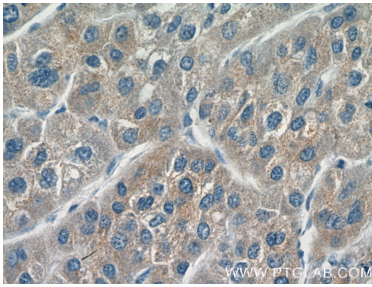
WB result of CYP20A1 antibody (16702-1-AP; 1:2000; incubated at room temperature for 1.5 hours) with sh-Control and sh-CYP20A1 transfected HEK-293 cells.



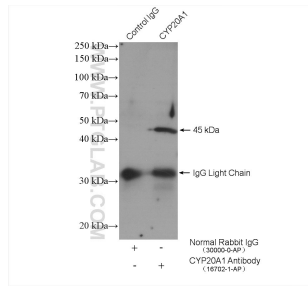
Various lysates were subjected to SDS PAGE followed by western blot with 16702-1-AP (CYP20A1 antibody) at dilution of 1:1000 incubated at room temperature for 1.5 hours.



Immunohistochemical analysis of paraffin-embedded human liver cancer tissue slide using 16702-1-AP (CYP20A1 antibody) at dilution of 1:200 (under 10x lens).



Immunohistochemical analysis of paraffin-embedded human liver cancer tissue slide using 16702-1-AP (CYP20A1 antibody) at dilution of 1:200 (under 40x lens).



IP result of anti-CYP20A1 (IP:16702-1-AP, 4ug; Detection:16702-1-AP 1:300) with MCF-7 cells lysate 2400 ug.