

For Research Use Only

# MTH1 Polyclonal antibody, PBS Only

Catalog Number: 16705-1-PBS

Featured Product



## Basic Information

**Catalog Number:**

16705-1-PBS

**Size:**

100ug, Concentration: 1 mg/ml by Nanodrop;

**Source:**

Rabbit

**Isotype:**

IgG

**Immunogen Catalog Number:**

AG10103

**GenBank Accession Number:**

BC014618

**GeneID (NCBI):**

4521

**UNIPROT ID:**

P36639

**Full Name:**

nudix (nucleoside diphosphate linked moiety X)-type motif 1

**Calculated MW:**

179aa, 20 kDa; 197aa, 23 kDa

**Observed MW:**

18-24 kDa

**Purification Method:**

Antigen affinity purification

## Applications

**Tested Applications:**

WB, IHC, IF/ICC, Indirect ELISA

**Species Specificity:**

human, mouse, rat

## Background Information

MTH1, also known as NUDT1 or 8-Oxo-dGTPase, is an important repair enzyme that prevents oxidative stress-induced DNA damage through hydrolyzing mutagenic 8-oxo-dGTP into 8-oxo-dGMP. MTH1 is expressed in postmitotic neurons as well as in proliferative tissues, and it is localized both in the mitochondria and nucleus. MTH1 might be a useful marker of oxidative stress and its level increased upon oxidative stress. Increased expression of MTH1 were also found in various cancer tissues and neurodegenerative diseases.

## Storage

**Storage:**

Store at -80°C.

**Storage Buffer:**

PBS only, pH7.3

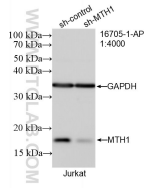
For technical support and original validation data for this product please contact:

T: 1 (888) 4PTGLAB (1-888-478-4522) (toll free in USA), or 1(312) 455-8498 (outside USA)

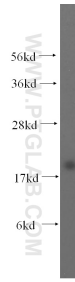
E: [proteintech@ptglab.com](mailto:proteintech@ptglab.com)  
W: [ptglab.com](http://ptglab.com)

**This product is exclusively available under Proteintech Group brand and is not available to purchase from any other manufacturer.**

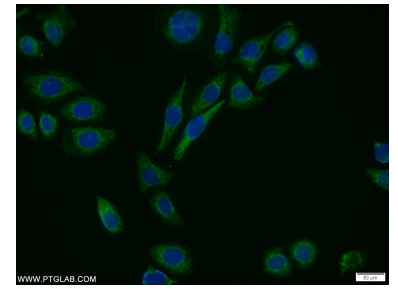
## Selected Validation Data



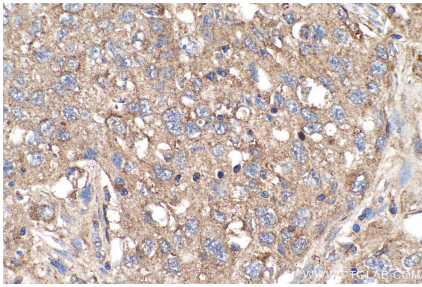
WB result of MTH1 antibody (16705-1-AP; 1:4000; incubated at room temperature for 1.5 hours) with sh-Control and sh-MTH1 transfected Jurkat cells. This data was developed using the same antibody clone with 16705-1-PBS in a different storage buffer formulation.



HepG2 cells were subjected to SDS PAGE followed by western blot with 16705-1-AP (MTH1 antibody) at dilution of 1:300 incubated at room temperature for 1.5 hours. This data was developed using the same antibody clone with 16705-1-PBS in a different storage buffer formulation.



Immunofluorescent analysis of PC-3 cells using 16705-1-AP (MTH1 antibody) at dilution of 1:25 and Alexa Fluor 488-conjugated AffiniPure Goat Anti-Rabbit IgG(H+L). This data was developed using the same antibody clone with 16705-1-PBS in a different storage buffer formulation.



Immunohistochemical analysis of paraffin-embedded human lung cancer tissue slide using 16705-1-AP (MTH1 antibody) at dilution of 1:4000 (under 40x lens). Heat mediated antigen retrieval with Tris-EDTA buffer (pH 9.0). This data was developed using the same antibody clone with 16705-1-PBS in a different storage buffer formulation.