

For Research Use Only

# RPL7L1 Polyclonal antibody

Catalog Number: 16707-1-AP

3 Publications



## Basic Information

### Catalog Number:

16707-1-AP

### Size:

150ul, Concentration: 450 ug/ml by Nanodrop;

### Source:

Rabbit

### Isotype:

IgG

### Immunogen Catalog Number:

AG10106

### GenBank Accession Number:

BC058020

### GeneID (NCBI):

285855

### UNIPROT ID:

Q6DK11

### Full Name:

ribosomal protein L7-like 1

### Calculated MW:

246 aa, 29 kDa

### Observed MW:

29 kDa

### Purification Method:

Antigen affinity purification

### Recommended Dilutions:

WB 1:2000-1:16000

IP 0.5-4.0 ug for 1.0-3.0 mg of total protein lysate

IHC 1:20-1:200

IF/ICC 1:10-1:100

## Applications

### Tested Applications:

WB, IHC, IF/ICC, IP, ELISA

### Cited Applications:

WB

### Species Specificity:

human, mouse, rat

### Cited Species:

human, mouse

**Note-IHC: suggested antigen retrieval with TE buffer pH 9.0; (\*) Alternatively, antigen retrieval may be performed with citrate buffer pH 6.0**

### Positive Controls:

**WB**: HEK-293T cells, HeLa cells, HepG2 cells, MCF-7 cells

**IP**: HepG2 cells,

**IHC**: human liver cancer tissue,

**IF/ICC**: MCF-7 cells,

## Notable Publications

Author	Pubmed ID	Journal	Application
Olga Gourdomichali	35205152	Biology (Basel)	WB
Mio Iwasaki	35573189	iScience	WB
Maserati Marc M	23211737	Zygote	

## Storage

### Storage:

Store at -20°C. Stable for one year after shipment.

### Storage Buffer:

PBS with 0.02% sodium azide and 50% glycerol pH 7.3.

Aliquoting is unnecessary for -20°C storage

\*\*\* 20ul sizes contain 0.1% BSA

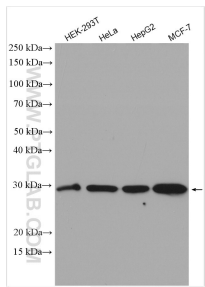
For technical support and original validation data for this product please contact:

T: 1 (888) 4PTGLAB (1-888-478-4522) (toll free in USA), or 1(312) 455-8498 (outside USA)

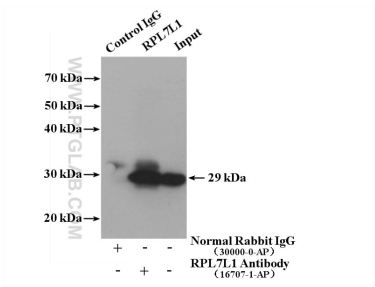
E: [proteintech@ptglab.com](mailto:proteintech@ptglab.com)  
W: [ptglab.com](http://ptglab.com)

This product is exclusively available under Proteintech Group brand and is not available to purchase from any other manufacturer.

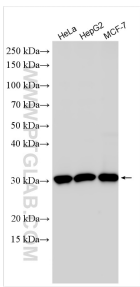
Selected Validation Data



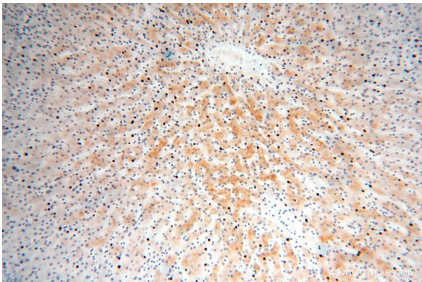
Various lysates were subjected to SDS PAGE followed by western blot with 16707-1-AP (RPL7L1 antibody) at dilution of 1:8000 incubated at room temperature for 1.5 hours.



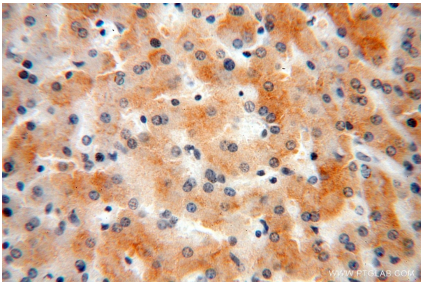
IP result of anti-RPL7L1 (IP:16707-1-AP, 4ug; Detection:16707-1-AP 1:1000) with HepG2 cells lysate 2240 ug.



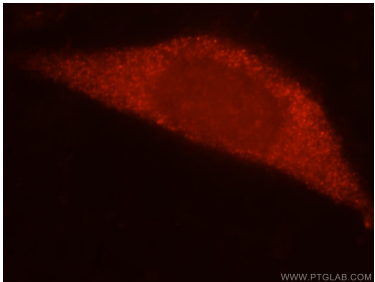
Various lysates were subjected to SDS PAGE followed by western blot with 16707-1-AP (RPL7L1 antibody) at dilution of 1:10000 incubated at room temperature for 1.5 hours.



Immunohistochemical analysis of paraffin-embedded human liver cancer using 16707-1-AP (RPL7L1 antibody) at dilution of 1:200 (under 10x lens).



Immunohistochemical analysis of paraffin-embedded human liver cancer using 16707-1-AP (RPL7L1 antibody) at dilution of 1:200 (under 40x lens).



Immunofluorescent analysis of MCF-7 cells, using RPL7L1 antibody 16707-1-AP at 1:25 dilution and Rhodamine-labeled goat anti-rabbit IgG (red).