

For Research Use Only

DMPK Polyclonal antibody, PBS Only

Catalog Number: 16711-1-PBS



Basic Information

Catalog Number:

16711-1-PBS

Size:

100ug, Concentration: 1 mg/ml by Nanodrop;

Source:

Rabbit

Isotype:

IgG

Immunogen Catalog Number:

AG10127

GenBank Accession Number:

BC062553

GeneID (NCBI):

1760

UNIPROT ID:

Q09013

Full Name:

dystrophia myotonica-protein kinase

Calculated MW:

629 aa, 69 kDa

Observed MW:

69-75 kDa

Purification Method:

Antigen affinity purification

Applications

Tested Applications:

WB, IHC, IF/ICC, Indirect ELISA

Species Specificity:

human, mouse, rat

Background Information

DMPK (Myotonic Dystrophy Protein Kinase) is a serine-threonine protein kinase, strongly linked to myotonic dystrophy type 1 (DM1), the most prevalent muscular dystrophy in adults (PMID: 19309729). It is best known for its association with myotonic dystrophy type 1 (DM1), a multisystemic genetic disorder characterized by myotonia, muscle wasting, cardiac conduction defects, and other systemic manifestations (PMID: 24136222).

Storage

Storage:

Store at -80°C.

Storage Buffer:

PBS only, pH7.3

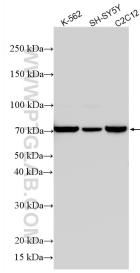
For technical support and original validation data for this product please contact:

T: 1 (888) 4PTGLAB (1-888-478-4522) (toll free in USA), or 1(312) 455-8498 (outside USA)

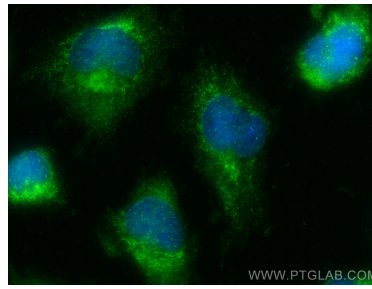
E: proteintech@ptglab.com
W: ptglab.com

This product is exclusively available under Proteintech Group brand and is not available to purchase from any other manufacturer.

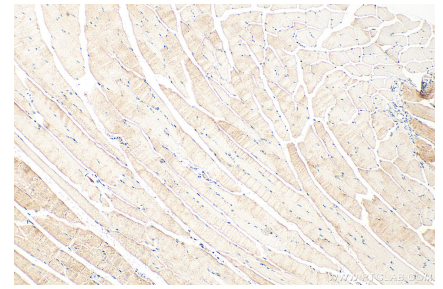
Selected Validation Data



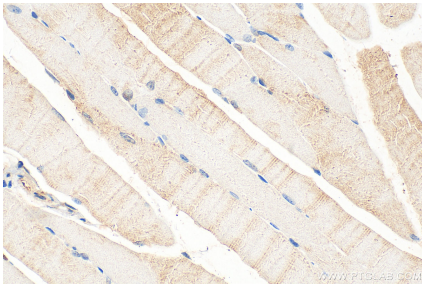
Various lysates were subjected to SDS PAGE followed by western blot with 16711-1-AP (DMPK antibody) at dilution of 1:1500 incubated at room temperature for 1.5 hours. This data was developed using the same antibody clone with 16711-1-PBS in a different storage buffer formulation.



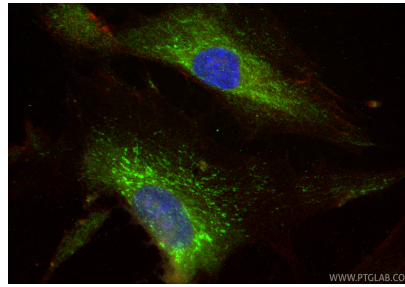
Immunofluorescent analysis of (-20°C Ethanol) fixed U-251 cells using DMPK antibody (16711-1-AP) at dilution of 1:400 and CoraLite®488-Conjugated Goat Anti-Rabbit IgG(H+L) (SA00013-2). This data was developed using the same antibody clone with 16711-1-PBS in a different storage buffer formulation.



Immunohistochemical analysis of paraffin-embedded mouse skeletal muscle tissue slide using 16711-1-AP (DMPK antibody) at dilution of 1:200 (under 10x lens). Heat mediated antigen retrieval with Tris-EDTA buffer (pH 9.0). This data was developed using the same antibody clone with 16711-1-PBS in a different storage buffer formulation.



Immunohistochemical analysis of paraffin-embedded mouse skeletal muscle tissue slide using 16711-1-AP (DMPK antibody) at dilution of 1:200 (under 40x lens). Heat mediated antigen retrieval with Tris-EDTA buffer (pH 9.0). This data was developed using the same antibody clone with 16711-1-PBS in a different storage buffer formulation.



Immunofluorescent analysis of (-20°C Ethanol) fixed HSkMC cells using DMPK antibody (16711-1-AP) at dilution of 1:200 and CoraLite®488-Conjugated Goat Anti-Rabbit IgG(H+L) (SA00013-2), CL594-Phalloidin (red). This data was developed using the same antibody clone with 16711-1-PBS in a different storage buffer formulation.