

For Research Use Only

# PSPC1 Polyclonal antibody

Catalog Number: 16714-1-AP

Featured Product

9 Publications



## Basic Information

### Catalog Number:

16714-1-AP

### Size:

150ul, Concentration: 700 ug/ml by Nanodrop;

### Source:

Rabbit

### Isotype:

IgG

### Immunogen Catalog Number:

AG10136

### GenBank Accession Number:

BC014184

### GeneID (NCBI):

55269

### UNIPROT ID:

Q8WXF1

### Full Name:

paraspeckle component 1

### Calculated MW:

523 aa, 59 kDa

### Observed MW:

66 kDa

### Purification Method:

Antigen affinity purification

### Recommended Dilutions:

WB 1:5000-1:50000

IP 0.5-4.0 ug for 1.0-3.0 mg of total protein lysate

IF/ICC 1:50-1:500

## Applications

### Tested Applications:

WB, IF/ICC, IP, ELISA

### Cited Applications:

WB, IF

### Species Specificity:

human, mouse, rat

### Cited Species:

human, mouse

### Positive Controls:

WB : HEK-293 cells, HepG2 cells, PC-3 cells

IP : HEK-293 cells,

IF/ICC : PC-3 cells,

## Background Information

PSPC1 (paraspeckle component 1), a known paraspeckle biomarker, is a putative transcription factor that belongs to the Drosophila behavior/human splicing (DBHS) family. PSPC1 was recently identified as a contextual determinant of tumor progression in multiple cancer types involving oncogenic reprogramming to switch proapoptotic TGF- $\beta$  to prometastatic TGF- $\beta$  via hijacking of Smad2/3 targeting. Upregulated PSPC1 is correlated with advanced tumor stages and poor survival of patients with breast, lung, and liver cancers. Upregulated PSPC1 potentiates expression of mesenchymal markers, EMT transcription factors (EMT-TF), cancer stem-like cell transcription factors (CSC-TF), and c-Myc-related proliferation genes, thus promoting migration, invasion, spheroid formation, tumor formation, and metastasis.

## Notable Publications

Author	Pubmed ID	Journal	Application
Jing Fan	30032211	Nucleic Acids Res	WB
Ralf Kleene	36674445	Int J Mol Sci	WB
Katherine L Harper	39592606	Nat Commun	IF

## Storage

### Storage:

Store at -20°C. Stable for one year after shipment.

### Storage Buffer:

PBS with 0.02% sodium azide and 50% glycerol pH 7.3.

Aliquoting is unnecessary for -20°C storage

\*\*\* 20ul sizes contain 0.1% BSA

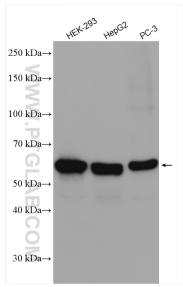
For technical support and original validation data for this product please contact:

T: 1 (888) 4PTGLAB (1-888-478-4522) (toll free in USA), or 1(312) 455-8498 (outside USA)

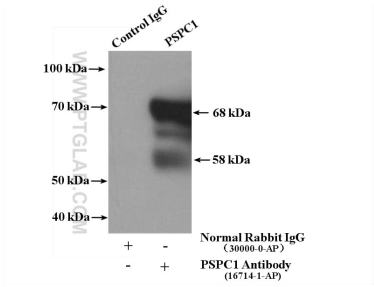
E: [proteintech@ptglab.com](mailto:proteintech@ptglab.com)  
W: [ptglab.com](http://ptglab.com)

This product is exclusively available under Proteintech Group brand and is not available to purchase from any other manufacturer.

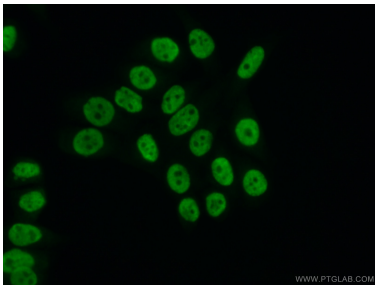
Selected Validation Data



Various lysates were subjected to SDS PAGE followed by western blot with 16714-1-AP (PSPC1 antibody) at dilution of 1:12000 incubated at room temperature for 1.5 hours.



IP result of anti-PSPC1 (IP:16714-1-AP, 4ug; Detection:16714-1-AP 1:1000) with HEK-293 cells lysate 2800ug.



Immunofluorescent analysis of (10% Formaldehyde) fixed PC-3 cells using 16714-1-AP (PSPC1 antibody) at dilution of 1:50 and Alexa Fluor 488-conjugated Goat Anti-Rabbit IgG(H+L).