

For Research Use Only

NPL Polyclonal antibody

Catalog Number: 16715-1-AP



Basic Information

Catalog Number: 16715-1-AP	GenBank Accession Number: BC058003	Purification Method: Antigen affinity purification
Size: 150ul , Concentration: 400 µg/ml by Nanodrop and 267 µg/ml by Bradford method using BSA as the standard;	GeneID (NCBI): 80896	Recommended Dilutions: WB 1:500-1:2000 IF 1:10-1:100
Source: Rabbit	Full Name: N-acetylneuraminate pyruvate lyase (dihydrodipicolinate synthase)	
Isotype: IgG	Calculated MW: 27 kDa, 35 kDa	
Immunogen Catalog Number: AG10137	Observed MW: 35 kDa	

Applications

Tested Applications: IF, WB, ELISA	Positive Controls:
Species Specificity: human, mouse, rat	WB : mouse brain tissue, Raji cells, mouse kidney tissue, rat brain tissue, rat kidney tissue
	IF : MCF-7 cells,

Background Information

The N-acetylneuraminate lyase (NPL) from human (hNAL) which consists of 320 amino acids, has a molecular mass of 35.2 kDa and it catalyses the reversible aldol reaction of sialic acid, and has been extensively used in the synthesis of sialic acids and its analogues (PMID:19057931). The enzyme is widely distributed and are present in numerous pro- and eukaryotic cells, in which they are localized only in the cytosol (PMID:12453637). It belongs to the DHDPS family and has 5 isoforms produced by alternative splicing.

Storage

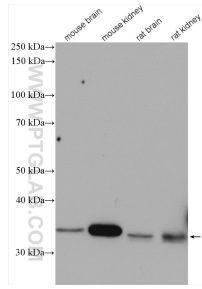
Storage:
Store at -20°C. Stable for one year after shipment.
Storage Buffer:
PBS with 0.02% sodium azide and 50% glycerol pH 7.3.
Aliquoting is unnecessary for -20°C storage

***** 20ul sizes contain 0.1% BSA**

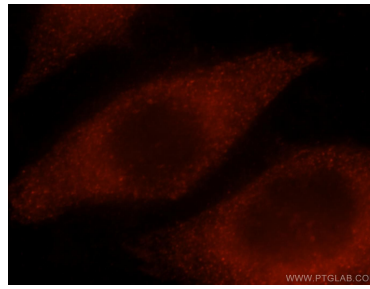
For technical support and original validation data for this product please contact:
T: 1 (888) 4PTGLAB (1-888-478-4522) (toll free in USA), or 1(312) 455-8498 (outside USA)
E: proteintech@ptglab.com
W: ptglab.com

This product is exclusively available under Proteintech Group brand and is not available to purchase from any other manufacturer.

Selected Validation Data



Various lysates were subjected to SDS PAGE followed by western blot with 16715-1-AP (NPL antibody) at dilution of 1:1000 incubated at room temperature for 1.5 hours.



Immunofluorescent analysis of MCF-7 cells, using NPL antibody 16715-1-AP at 1:25 dilution and Rhodamine-labeled goat anti-rabbit IgG (red).