

For Research Use Only

TMEM71 Polyclonal antibody

Catalog Number: 16722-1-AP **1 Publications**



Basic Information

| | | |
|--|---|--|
| Catalog Number: 16722-1-AP | GenBank Accession Number: BC105783 | Purification Method: Antigen affinity purification |
| Size: 150ul , Concentration: 500 µg/ml by Nanodrop and 287 µg/ml by Bradford method using BSA as the standard; | GeneID (NCBI): 137835 | Recommended Dilutions: IHC 1:20-1:200 |
| Source: Rabbit | Full Name: transmembrane protein 71 | |
| Isotype: IgG | Calculated MW: 232 aa, 26 kDa | |
| Immunogen Catalog Number: AG10161 | | |

Applications

| | |
|--|--|
| Tested Applications: IHC, ELISA | Positive Controls: IHC : human prostate cancer tissue, |
| Cited Applications: IHC | |
| Species Specificity: human | |
| Cited Species: human | |
| Note-IHC: suggested antigen retrieval with TE buffer pH 9.0; (*) Alternatively, antigen retrieval may be performed with citrate buffer pH 6.0 | |

Background Information

TMEM71 is a transmembrane protein which was found to be associated with the glucocorticoids (GC) response status of the Acute Graft-versus-Host Disease (aGvHD) patients.

Notable Publications

| Author | Pubmed ID | Journal | Application |
|-----------|-----------|----------|-------------|
| Wenhao Li | 36403174 | Hum Cell | IHC |

Storage

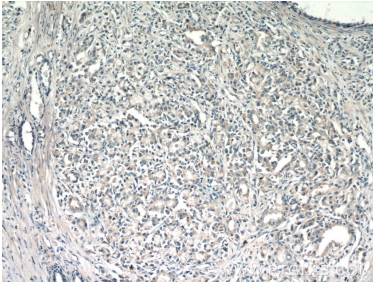
Storage:
Store at -20°C. Stable for one year after shipment.
Storage Buffer:
PBS with 0.02% sodium azide and 50% glycerol pH 7.3.
Aliquoting is unnecessary for -20°C storage

*** 20ul sizes contain 0.1% BSA

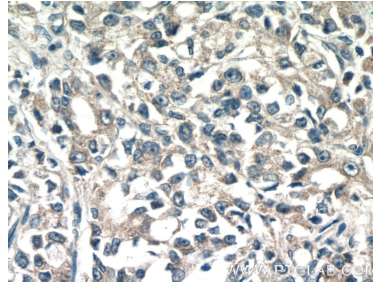
For technical support and original validation data for this product please contact:
T: 1 (888) 4PTGLAB (1-888-478-4522) (toll free in USA), or 1(312) 455-8498 (outside USA) E: proteintech@ptglab.com W: ptglab.com

This product is exclusively available under Proteintech Group brand and is not available to purchase from any other manufacturer.

Selected Validation Data



Immunohistochemical analysis of paraffin-embedded human prostate cancer tissue slide using 16722-1-AP (TMEM71 Antibody) at dilution of 1:50 (under 10x lens).



Immunohistochemical analysis of paraffin-embedded human prostate cancer tissue slide using 16722-1-AP (TMEM71 Antibody) at dilution of 1:50 (under 40x lens).