

CPOX Polyclonal antibody

Catalog Number: 16724-1-AP

Basic Information

Catalog Number: 16724-1-AP	GenBank Accession Number: BC017210	Purification Method: Antigen affinity purification
Size: 150ul , Concentration: 700 µg/ml by Nanodrop;	GeneID (NCBI): 1371	Recommended Dilutions: WB 1:1000-1:4000
Source: Rabbit	Full Name: coproporphyrinogen oxidase	IP 0.5-4.0 ug for IP and 1:500-1:2000 for WB
Isotype: IgG	Calculated MW: 454 aa, 50 kDa	IHC 1:20-1:200
Immunogen Catalog Number: AG10164	Observed MW: 36 kDa	

Applications

Tested Applications: IHC, IP, WB, ELISA	Positive Controls:
Species Specificity: human, mouse, rat	WB : HepG2 cells, human liver tissue, K-562 cells, mouse liver tissue, rat liver tissue
Note-IHC: suggested antigen retrieval with TE buffer pH 9.0; (*) Alternatively, antigen retrieval may be performed with citrate buffer pH 6.0	IP : HepG2 cells,
	IHC : human liver tissue, human testis tissue

Background Information

CPOX(Coproporphyrinogen-III oxidase, mitochondrial) is also named as CPO and CPX. Human CPO is a 76 kDa protein that is active as a homodimer in the mitochondrial intermembrane space (PMID:16159891). Mutations in human CPO gene predict the clinical outcome of the disease, with either hepatic hereditary coproporphyrria or hematological manifestations of erythropoietic harderoporphyrria. CPOX has a transit peptide of 110 aa and the chain contains 344 aa.

Storage

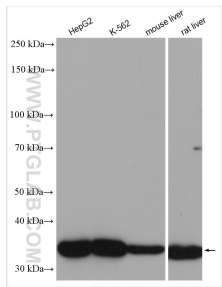
Storage:
Store at -20°C. Stable for one year after shipment.
Storage Buffer:
PBS with 0.02% sodium azide and 50% glycerol pH 7.3.
Aliquoting is unnecessary for -20°C storage

*** 20ul sizes contain 0.1% BSA

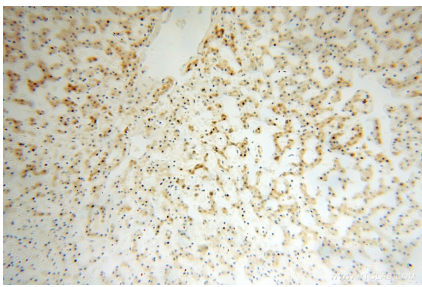
For technical support and original validation data for this product please contact:
T: 1 (888) 4PTGLAB (1-888-478-4522) (toll free in USA), or 1(312) 455-8498 (outside USA)
E: proteintech@ptglab.com
W: ptglab.com

This product is exclusively available under Proteintech Group brand and is not available to purchase from any other manufacturer.

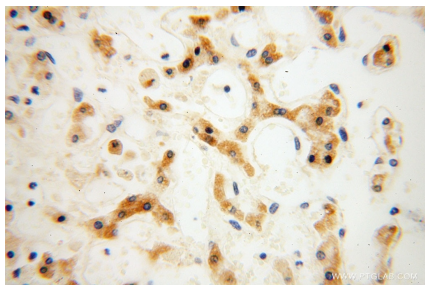
Selected Validation Data



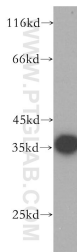
Various lysates were subjected to SDS PAGE followed by western blot with 16724-1-AP (CPOX antibody) at dilution of 1:2000 incubated at room temperature for 1.5 hours.



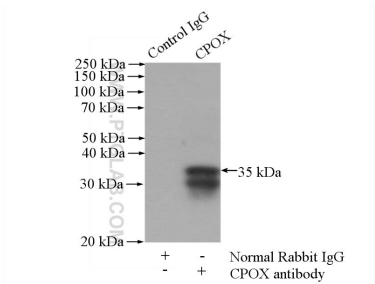
Immunohistochemical analysis of paraffin-embedded human liver using 16724-1-AP (CPOX antibody) at dilution of 1:100 (under 10x lens).



Immunohistochemical analysis of paraffin-embedded human liver using 16724-1-AP (CPOX antibody) at dilution of 1:100 (under 40x lens).



K-562 cells were subjected to SDS PAGE followed by western blot with 16724-1-AP (CPOX antibody) at dilution of 1:1000 incubated at room temperature for 1.5 hours.



IP Result of anti-CPOX (IP:16724-1-AP, 4ug; Detection:16724-1-AP 1:1000) with HepG2 cells lysate 1800ug.