

For Research Use Only

# SOX15 Polyclonal antibody

Catalog Number: 16725-1-AP **1 Publications**



## Basic Information

|  |  |  |
|--|--|--|
| <b>Catalog Number:</b><br>16725-1-AP   | <b>GenBank Accession Number:</b><br>BC000985               | <b>Purification Method:</b><br>Antigen affinity purification     |
| <b>Size:</b><br>150ul , Concentration: 600 µg/ml by Nanodrop and 333 µg/ml by Bradford method using BSA as the standard; | <b>GeneID (NCBI):</b><br>6665                              | <b>Recommended Dilutions:</b><br>IHC 1:50-1:500<br>IF 1:50-1:500 |
| <b>Source:</b><br>Rabbit   | <b>Full Name:</b><br>SRY (sex determining region Y)-box 15 |  |
| <b>Isotype:</b><br>IgG   | <b>Calculated MW:</b><br>25 kDa                            |  |
| <b>Immunogen Catalog Number:</b><br>AG10173  |  |  |

## Applications

|   |  |
|---|--|
| <b>Tested Applications:</b><br>IF, IHC, ELISA | <b>Positive Controls:</b><br>IHC : mouse embryo tissue,<br>IF : mouse embryo tissue, |
| <b>Cited Applications:</b><br>IF              |  |
| <b>Species Specificity:</b><br>human, mouse   |  |
| <b>Cited Species:</b><br>human, pig           |  |

**Note-IHC: suggested antigen retrieval with TE buffer pH 9.0; (\*) Alternatively, antigen retrieval may be performed with citrate buffer pH 6.0**

## Background Information

### Notable Publications

| Author   | Pubmed ID | Journal  | Application |
|----------|-----------|----------|-------------|
| Min Chen | 36323261  | Cell Rep | IF          |

## Storage

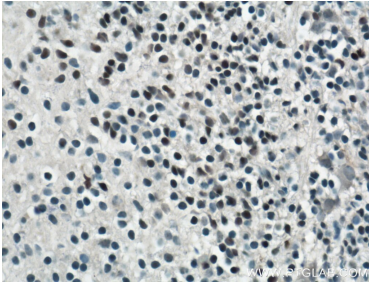
**Storage:**  
Store at -20°C. Stable for one year after shipment.  
**Storage Buffer:**  
PBS with 0.02% sodium azide and 50% glycerol pH 7.3.  
Aliquoting is unnecessary for -20°C storage

\*\*\* 20ul sizes contain 0.1% BSA

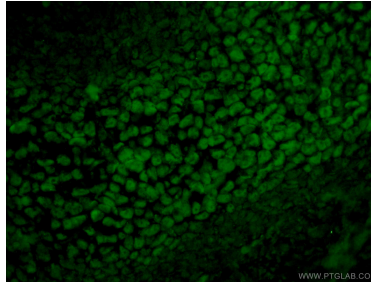
For technical support and original validation data for this product please contact:  
T: 1 (888) 4PTGLAB (1-888-478-4522) (toll free in USA), or 1(312) 455-8498 (outside USA) E: proteintech@ptglab.com W: ptglab.com

This product is exclusively available under Proteintech Group brand and is not available to purchase from any other manufacturer.

## Selected Validation Data



Immunohistochemical analysis of paraffin-embedded mouse embryo tissue slide using 16725-1-AP (SOX15 Antibody) at dilution of 1:200 (under 40x lens). Heat mediated antigen retrieval with Tris-EDTA buffer (pH 9.0).



Immunofluorescent analysis of (4% PFA) fixed mouse embryo tissue using 16725-1-AP (SOX15 antibody) at dilution of 1:100 and Alexa Fluor 488-conjugated AffiniPure Goat Anti-Rabbit IgG(H+L).